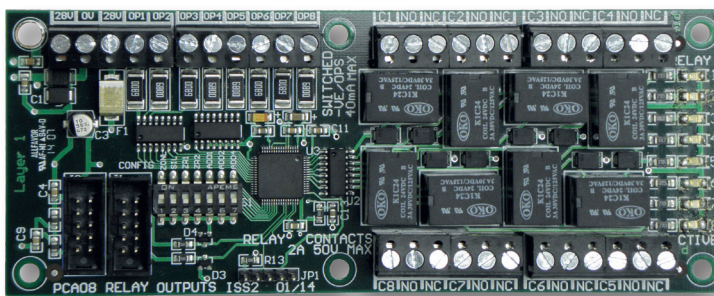


# PERIPHERALS

## ESG OUTPUT CARD



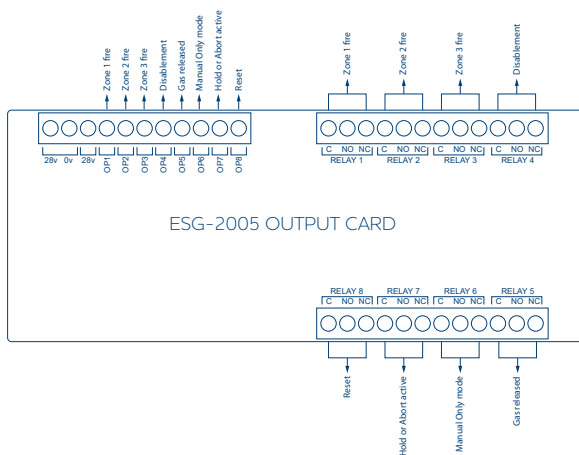
- Provides additional zonal and operation outputs
- Volt free changeover relay outputs plus switch -ve outputs
- Suitable for Esprit extinguishant release control panels
- Card fits inside control panel

### Technical Specifications

Supply Input	Max input current 200mA. Input voltage 22 - 32vdc
Supply Output	28v, fused @ 500mA, resettable fuse
OP1 - OP8	Switched -ve outputs, overload voltage protected to 52vdc. Max load = 40mA per output
Relay Contacts 1 - 8	Clean changeover contacts, un-fused. Max 3A @ 30vdc

### Order Code

ESG-2005	Peripheral Output Card
----------	------------------------



**+44 (0) 1895 424505**