

# OPERATING INSTRUCTIONS

## SWP-EL-2 PROGRAMMER FOR "WINDOWS"

### VERSION V1.0

#### SUITABILITY

SURVEYOR ELITE1-A V2.00 ONWARDS SINGLE LOOP APOLLO PROTOCOL  
SURVEYOR ELITE1-N V2.00 ONWARDS SINGLE LOOP NITTAN PROTOCOL

#### PROGRAMMER KIT CONTENTS

- 1) SOFTWARE INSTALLATION DISKETTE
- 2) PROGRAMMING ADAPTER
- 3) SERIAL CABLE
- 4) ULTRA PP3 BATTERY (INSIDE PROGRAMMER)
- 5) SPARE NOVRAM CHIP (24LC65)

#### SOFTWARE REQUIREMENTS

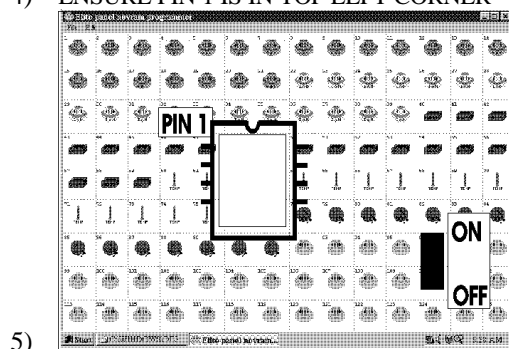
THE SOFTWARE REQUIRES WINDOWS 3.1 95 OR 98.  
3.5 FLOPPY DISK DRIVE TO INSTALL  
SERIAL COM PORT COM 1 OR COM 2 AVAILABLE  
COLOUR GRAPHIC DISPLAY RECOMMENDED  
OPTIONAL PRINTER TO PRINT OUT SITE DETAILS IF REQUIRED

#### INSTALLATION

- 1) PLACE DISK IN FLOPPY DRIVE
- 2) RUN SETUP.EXE TO INSTALL SOFTWARE TO HARD DRIVE
- 3) CHECK CONNECTION OF BATTERY IN PROGRAMMER
- 4) CONNECT SERIAL CABLE FROM PROGRAMMER TO COM PORT ON PC
- 5) INVOKE ELITE1 PROGRAM FROM START MENU
- 6) EDIT DEVICES ON SCREEN FOR REQUIRED SETUP
- 7) OR LOAD EXISTING NOVRAM OR FILE.

#### PROGRAMMING

- 1) RETRIEVE NOVRAM FROM ELITE 1 PANEL (OR USE SPARE)
- 2) NOTE NOVRAM IS RIGHT HAND CONFIG CHIP U15.
- 3) FIT NOVRAM CHIP INTO PROGRAMMER SOCKET
- 4) ENSURE PIN 1 IS IN TOP LEFT CORNER



SWITCH POWER ON BEFORE SELECTING WRITE TO NOVRAM IN PROGRAM

SWITCH POWER OFF WHEN PROGRAMMING COMPLETED

WARNING IF SWITCH IS LEFT ON BATTERY WILL GO FLAT IN A FEW HOURS.

#### TECHNICAL SUPPORT

CALL OUR TECHNICAL SUPPORT DEPT ON 01895 422066  
OR E MAIL AT haesman@aol.com

REF -----