



# **ESPRIT - ADDRESSABLE FIRE CONTROL PANEL CONFIGURATION SOFTWARE USER MANUAL**

This manual covers the programming of the one to two loop and one to four loop Esprit-Argus & Apollo Addressable fire alarm control panels, using the Haes Configuration Panel software.

## SAFETY

### IMPORTANT NOTICE

PLEASE READ THIS MANUAL CAREFULLY AND OBSERVE ALL ADVICE GIVEN WITHIN IT.

THIS PARTICULARLY APPLIES TO THE PRECAUTIONS NECESSARY TO AVOID ELECTRO-STATIC DISCHARGE



### Important Safety Notes

The panel is safe to operate provided it has been installed in compliance with the manufacturer's instructions and used in accordance with this manual.

Hazardous voltages are present inside the panel—DO NOT open it unless you are qualified and authorised to do so. There is no need to open the panel's enclosure except to carry out commissioning, maintenance and remedial work. This work must only be carried out by competent service personnel who are fully conversant with the contents of the panel's installation manual and have the necessary skills for maintaining this equipment.

This fire alarm system requires periodic checks as specified in BS 5839 Part 1. It is the responsibility of the system user to ensure it is regularly serviced and maintained in good working order.

The product must be installed, commissioned and maintained for operation in accordance with the instructions and the applicable wiring codes of practice and national standard regulations for fire systems appropriate to the country and location of the installation.

This equipment is designed to be operated from 230VAC 50/60 Hz mains supplies and is of Class I construction. As such it must be connected to a protective earthing conductor in the fixed wiring of the installation. Failure to ensure that all conductive accessible parts of this equipment are adequately bonded to the protective earth will render the equipment unsafe.

### Disclaimer

No responsibility can be accepted by the manufacturer or distributors of this fire alarm panel for any misinterpretation of an instruction or guidance note or for the compliance of the system as a whole. The manufacturer's policy is one of continuous improvement and we reserve the right to make changes to product specifications at our discretion and without prior notice. E & O E.

### Warnings

	<p>Before installation, refer to the Ratings shown on the label inside the product and to the 'Specifications Chart' in this document. If you are unclear on any point, please DO NOT proceed. Contact the manufacturer or supplier for clarification and guidance.</p> <p>Only Trained service personnel should undertake the Installation, Programming and Maintenance of this equipment.</p>
--	---

## TABLE OF CONTENTS

SAFETY .....	1
IMPORTANT NOTICE.....	1
Important Safety Notes.....	1
Disclaimer .....	1
Warnings.....	1
TABLE OF CONTENTS.....	2
PRODUCT OVERVIEW.....	4
General .....	4
System Requirements .....	4
DESIGN CONSIDERATIONS.....	5
System Design and Planning.....	5
Detection Zones.....	5
Detectors .....	6
Call Points.....	6
Sounders .....	6
Beacons.....	6
General.....	6
HAES CONFIGURATION PANEL .....	7
Description .....	7
Definitions .....	7
Toolbar .....	7
Loop Setup.....	8
Zones Setup Window .....	11
Group Setup Page.....	13
Profiles .....	14
Panel.....	15
Transfer.....	17
Mimic.....	17
INSTALLATION .....	19
CONFIGURING THE SYSTEM.....	19
New Panel Setup.....	19
System Design .....	21
Loop Setup .....	21
Populating a Loop .....	21
Configuring devices on a Loop .....	21
Zone Setup .....	22
Populating a Zone .....	22

Configuring a Zone ..... 22

Configuring devices in a Zone ..... 22

Groups Setup..... 23

Forming devices into Groups ..... 23

Configuring a Group ..... 23

Configuring devices in a Group ..... 24

Configuring devices in a Loop, Zone or Group ..... 24

Profiles ..... 28

Panel ..... 29

Transfer ..... 30

Mimic ..... 32

## PRODUCT OVERVIEW

### General

Quality, reliability, ease of use and feature rich are attributes that are consistent across the entire range of Haes fire alarm control panels. The ESPRiT Addressable panels encompass all these attributes, to provide the fire alarm engineer's panel of choice.

For the fire alarm engineer, the panel has been designed to be easy to install and to minimise labour costs, by providing ample room for tasks such as wiring and changing batteries. Activation is via key switch or access code, which means you should always be able to work on the panel and the one man walk tests will help reduce the cost of maintaining the fire alarm system.

ESPRiT Addressable fire control panels are designed to be intuitive and flexible for the fire alarm engineer to programme and incorporates a large 240 x 64-pixel graphical display, with an easy-to-navigate menu system, which uses simple discernible icons in each section.

Simplicity is one of the most important aspects when considering the end user of a fire alarm panel. The easy-to-read control panel, with its graphical LCD display and five marked control buttons, and the 3-step silence functionality gives non-technical people the confidence to correctly manage their fire alarm system.

All inputs and outputs are fully programmable and there are options to have delays to the outputs. The programming features also include 3 different modes to help reduce false alarms. Local fire authorities are demanding this type of functionality to reduce unwanted callouts from alarm receiving centres.

As an addressable panel, signals from detectors, manual call points or any other devices are individually identified at the control panel's LCD graphical display. In addition, the control panel LED indicators will provide a simple 'at a glance' overview of which zone or zones have gone into the alarm condition, showing the extent of fire or smoke spread.

The panel supports connections for up to sixteen Remote Status Units (RSUs), remote control call points and repeaters, via an RS-485 Peripheral BUS (PBUS) circuit. The PBUS circuit is not intended for networking.

ESPRiT Addressable panels are approved to European standards EN54-2 & 4, Fire Detection and Alarm Systems – Control & Indicating Equipment.

This product has been designed and manufactured in the United Kingdom.

The Haes Configuration panel software enhances the ease of programming for the panel by enabling the engineer to both download existing panel configurations for amendment, or programme new panel configuration 'off panel' before uploading onto the panel. Programming of the configuration uses easy to follow graphical depictions of devices, Loops, Zones and Groups.

### System Requirements

The Haes Configuration Panel software is designed for use with Windows 7 and Windows 10 Operating System. It is not intended for use with Apple macOS, Android or Linux OS.

The following are required:

- Laptop or Tablet device running Windows 7 or Windows 10 OS (processor speed/memory requirements?)
- Cable with a USB-B connector.

## DESIGN CONSIDERATIONS

### System Design and Planning

**Note:** This guide is intended as an aid to designers and installers of fire detection systems. It is NOT to be used as a substitute for BS5839, which should be read in full.

#### Detection Zones

To direct those responding to a fire alarm signal, particularly the fire service, to the area of a fire, all buildings, other than very small buildings, need to be divided into detection zones. Detection zones need to be small enough for a fire to be located quickly.

If the total floor area of the building is greater than 300m<sup>2</sup>, each zone should be restricted to a single storey

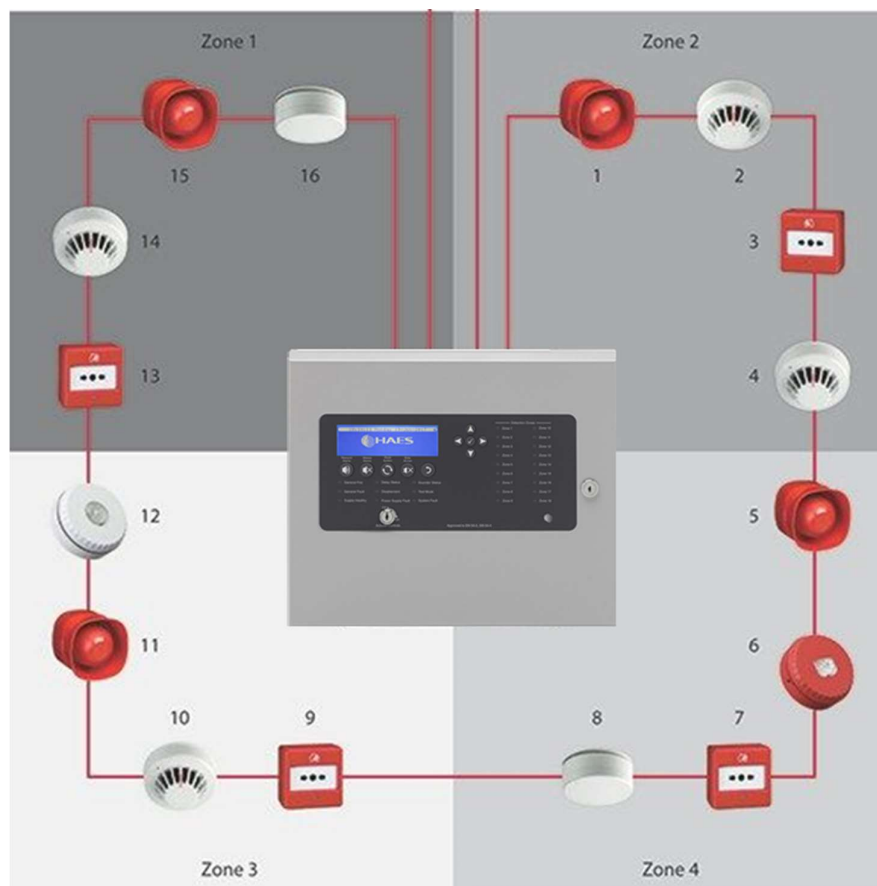
If the total floor area of the building is less than 300m<sup>2</sup> a zone may cover more than a single storey

For voids above or below the floor area of a room, these may be included within the same zone of the room, provided that the void and the room constitute a single fire compartment.

Any enclosed stair well, lift well or other enclosed flue-like structure should be considered as a separate detection zone.

The floor area of a single zone should not exceed 2000m<sup>2</sup>.

Zone indication should be given at the fire alarm control panel.



## Detectors

The sensing element of a smoke detection device should not be less than 25mm and not more than 600mm below ceiling

The sensing element of a heat detector should not be less than 25mm and not more than 150mm below ceiling

When mounted on a flat ceiling, smoke detection devices have an individual coverage of 7.5m radius. However, these radii must overlap to ensure there are no 'blindspots'. Therefore, individual coverage can be represented by a square measuring 10.6m x 10.6m giving an actual coverage of 112m<sup>2</sup> per device

When mounted on a flat ceiling, heat detection devices have an individual coverage of 5.3m radius. However, these radii must overlap to ensure there are no 'blindspots'. Therefore, individual coverage can be represented by a square measuring 7.5m x 7.5m giving an actual coverage of 56.3m<sup>2</sup> per device.

## Call Points

A person should not have to travel more than 45m along an escape route to reach a Manual Call Point (25m if disabled person to operate, or rapid development of the fire is likely). Manual Call Points should be sited at all stair wells and exits from the building.

The frangible element of the manual call point should be positioned 1.4m (+/- 200mm) from the floor level. (Unless a wheelchair user is likely to be the first person to raise the alarm).

## Sounders

Sounder device cabling should be arranged so that in the event of a fault, at least one sounder will remain operational during a fire condition.

The minimum sound level should be 65dB(A) or 5dB(A) above a background noise which is louder than 60dB(A) (if lasting more than 30 seconds) and at a frequency of between 500Hz and 1000Hz. The maximum sound level should not be greater than 120dB(A) at any normally accessible point. This may be reduced to 60dB(A) in stairways, enclosures up to 60m<sup>2</sup> and specific points of limited extent.

For areas where people are sleeping, sounder devices should produce a minimum 75dB(A) at the bedhead with all doors shut. In buildings providing sleeping accommodation for a significant number of people, all bedrooms should have both audible and visual alarms.

## Beacons

Visual alarms such as beacons, should always be mounted at a minimum height of 2.1m from floor level.

## General

Fire Alarm Control Panels should be installed at a location appropriate for staff and fire fighters.

All mains supply isolators must be double pole and suitably marked.

All joints to be fire resisting, junction boxes to be labelled 'FIRE ALARM'.

All cables to be fire resisting with a minimum cross-sectional area of 1mm<sup>2</sup>.

Cable using trunking as a means of containment must be clipped using fire resistant supports WITHIN THE TRUNKING.

Zone charts should be fitted in all appropriate locations (adjacent to control equipment and repeaters).

## HAES CONFIGURATION PANEL

### Description

The Haes Configuration Panel software allows the fire system engineer to configure the Haes Technologies Esprit addressable fire control panel (Argus and Apollo protocol), and the wider system and attached devices, using a laptop or tablet device, before downloading the configuration to the panel.

The configuration software also allows the engineer to upload previously created configuration, from the panel, to enable easier modification of the configuration (from individual devices, to the whole system).

The Configuration Panel software toolbar opens a range of Setup windows, on which the configuration can be designed, and the data can be transferred to/from the Esprit panel.

### Definitions

The following terms are used in the setup of the system:

- Loop – an addressable communications bus, to which input and output devices are attached.
- Zone – a selection of input and output devices (possibly, but not necessarily, in a single geographical location). Note - devices from more than one loop may be allocated in a zone.
- Group – a collection of input and output devices (e.g. detectors and sounders) that are related by a cause and effect definition. The devices in a group may or may not be in the same geographical location (e.g. input devices within a group may be in room/building A, whilst the output devices may be in room/building B, to enable a warning to be given in building B that an incident is occurring in building A). When the defined input conditions for the group have been met, the group becomes activated and the output and sounder devices in the group activate their defined output response.

### Toolbar

- New - open a new configuration file.
- Open - open a saved configuration file.
- Save – saves changes made to the current configuration file.
- Save as – save the current configuration file to a drive location.
- Export – export the open configuration file to another user/drive location.
- Undo/Redo – undo/redo the last step.
- Loop 1/Loop 2 etc. – Loop setup, for allocating devices to addresses on each Loop and configuring the devices individually.
- Zones – Zone setup, for configuring the Zones and individual devices in a Zone.
- Groups – Group setup, for allocating devices to a Group and configuring individual devices in a Group, including the input and output conditions.
- Profiles – sounder profile setup, for configuring the various tones required for a Sounder Profile.
- Panel – panel configuration setup page. For configuring the panel (e.g. LCD brightness, time, buzzer volume, logo, dependency mode, etc.).




- Transfer – transfers the populated configuration file to the panel.
- Mimic – displays a graphic of the control panel.
- Port: - The Port settings are to configure which COM port is to be used to communicate with the panel. The drop-down is only populated with COM ports that are available. These are added to the drop-down when the cable is connected.
- Refresh – refreshes the COM port connection.
- Connect/Disconnect – establishes the connection between the portable computing device and the panel, ready for the transfer of the configuration file and breaks the connection when finished transferring data files.

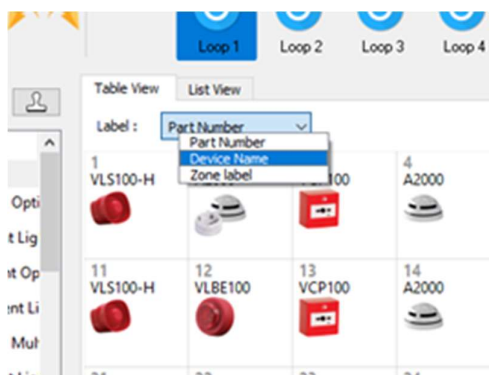


## Loop Setup

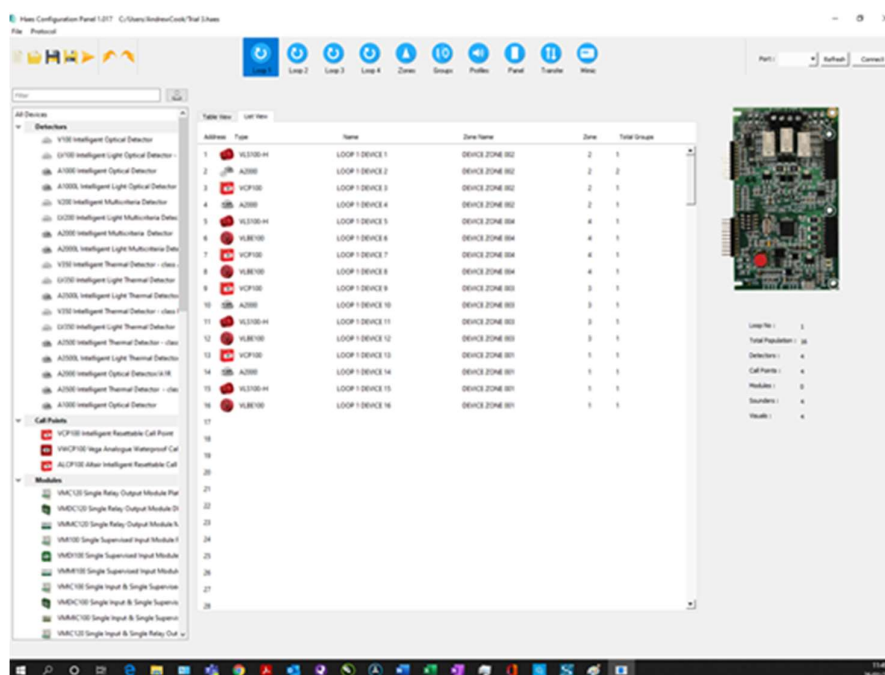
The Toolbar displays Loop setup buttons (Loop 1, Loop 2, etc., depending on the number of loops selected in the initial panel setup), for accessing the Loop setup window.

The Loop setup window is used for allocating devices to addresses on the Loop and for configuring individual devices. The Loop setup window is made up of:

- a list of All Devices (Detectors, Call Points, Sounders, etc.), that are compatible with the chosen protocol (Argus/Apollo), together with a Filter box for narrowing the device selection and a 'Rubber Stamp' button  for inserting multiple copies of a given device into the device address table.
- a device address table, which displays the devices allocated to each address on the Loop (240 addresses per loop), which can be displayed in either Table View or List View:
  - in Table View, the loop is displayed as a grid, with a graphic of the device and a label to identify it. The device label for all devices displayed in the grid can be changed, using the Label: drop-down at the top of the window, to display:
    - Part Number
    - Device Name
    - Zone Label



- in List View, the loop is displayed as a list table showing a graphic of the device at each address, together with:
  - Address
  - Type
  - Device Name
  - Zone Name
  - Zone
  - Total Groups

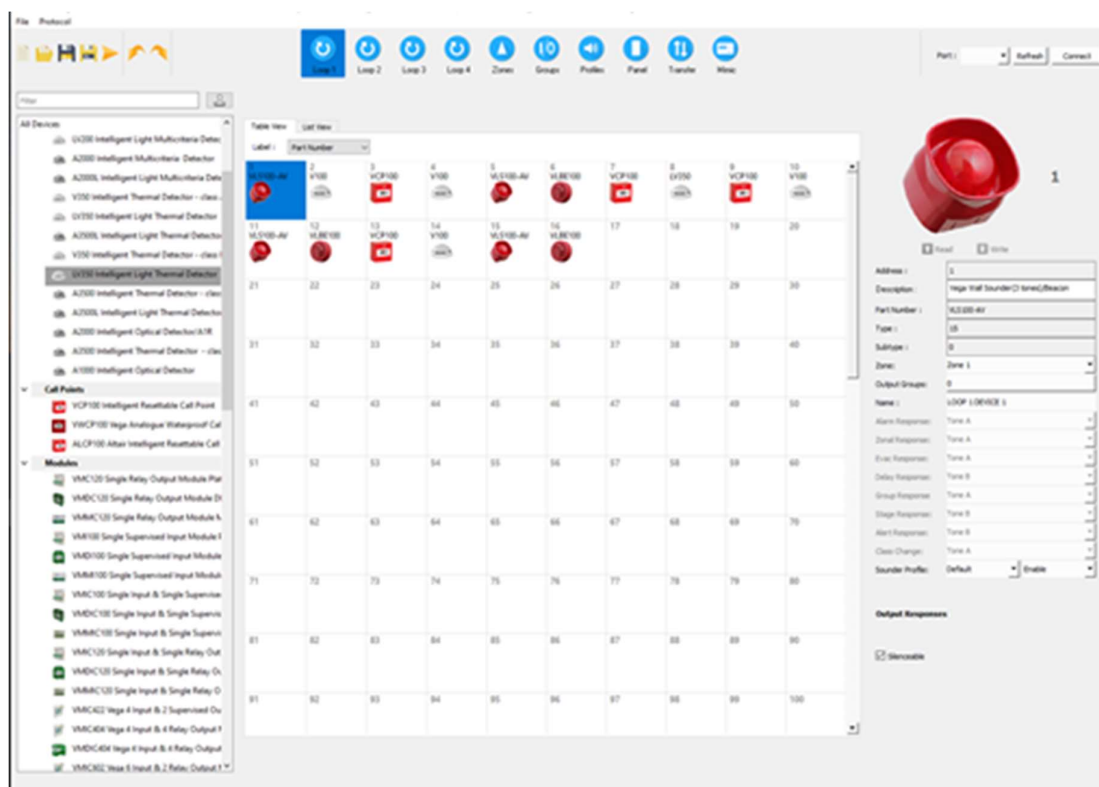


- a graphical view of either:
  - the Loop Card, showing the Loop No., Total Population of devices connected to the loop, number of each device type (detectors, call points, Modules, sounders, and visuals),
  - or, on selection of a device in either Table View or List View, a graphical view

of the selected device at that address together with a table of information for the device (which differs between input and output devices), some of which is configurable for the individual device:

- Input device (Call Point, Detectors, etc.):
  - Address
  - Description
  - Part Number
  - Type
  - Subtype
  - Zone
  - Input Groups  
and/or
  - Output Groups
  - Name
  - Day Sensitivity\*
    - Sensitivity 1 - 4
  - Night Sensitivity\*
    - Sensitivity 1 - 4
  - Detector Base\*
    - Standard Base
    - Sounder Base<sup>1</sup>
    - Multitone Sounder Base<sup>2</sup>
  - Input Attributes (Latching and Dependency\* checkboxes)
  - 1Output Responses
- Output device (Beacons, Sounders/Detector Sounder Base, etc.):
  - Address
  - Description
  - Part Number
  - Type
  - Subtype
  - Zone
  - Input Groups  
and/or
  - Output Groups
  - Name
  - Outputs (Output Off/Tone A/Tone B):

- Alarm Response
- Zonal Response
- Evac Response
- Delay Response
- Group Response
- Stage Response
- Alert Response
- Class Change
- Sounder Profile

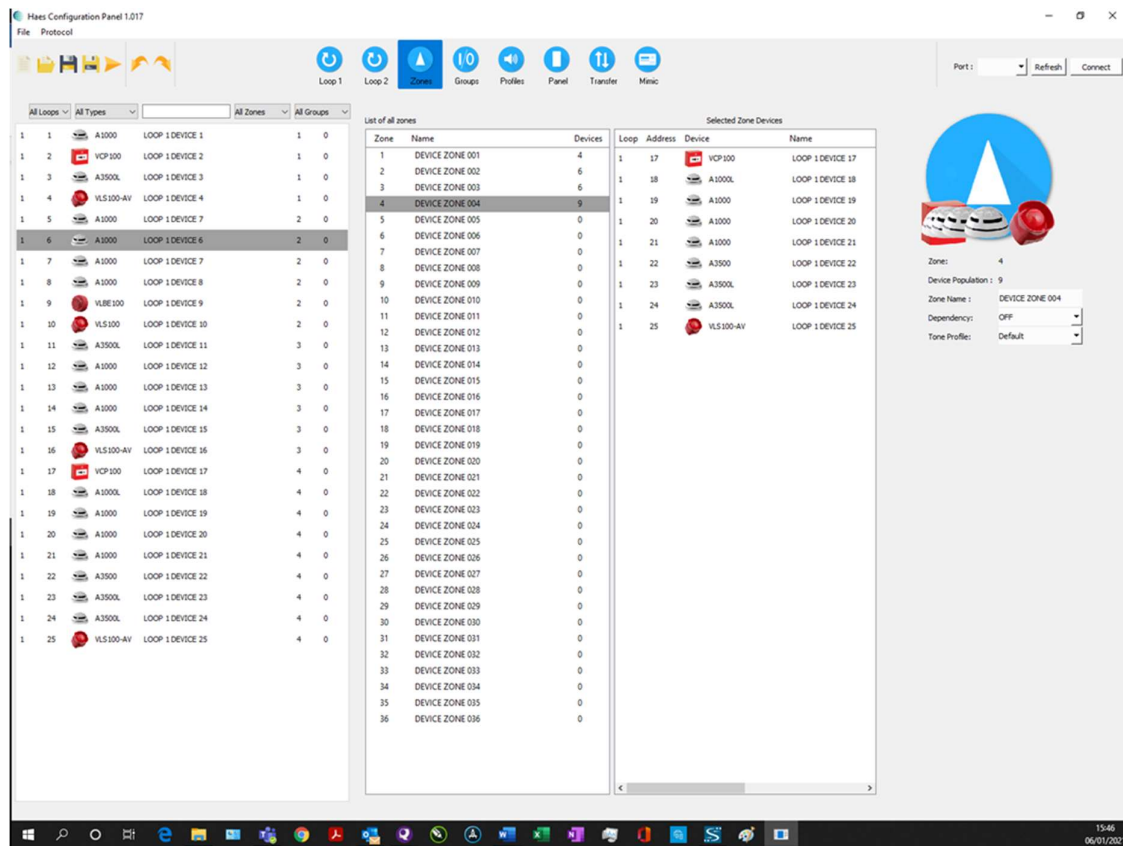


## Zones Setup Window

The Zones window is used to configure the Zones and the devices within the Zones. It presents three tables and a graphical display detailing:

- a list of all devices allocated to the Loops, which can be filtered by:
  - Loop
  - Type
  - Device Name
  - Zone
  - Group
- List of All Zones, showing:

- Zone
- Device Name
- Number of Devices allocated to the Zone
- Selected Zone devices, a list of all devices in the Zone selected in the List of All Zones table
- The graphical display on the right of the page displays either:
  - the devices allocated to the Zone currently selected in the List of All Zones; and can be used to configure each Zone (Name, Dependency, Tone Profile)
  - or, on selection of a device in the Selected Zone Devices table, a graphical view of the selected device, together with a table of information for the device selected (e.g. Address, Description, Part Number, Name, etc.), some of which is configurable (as previously seen in the Loop window).

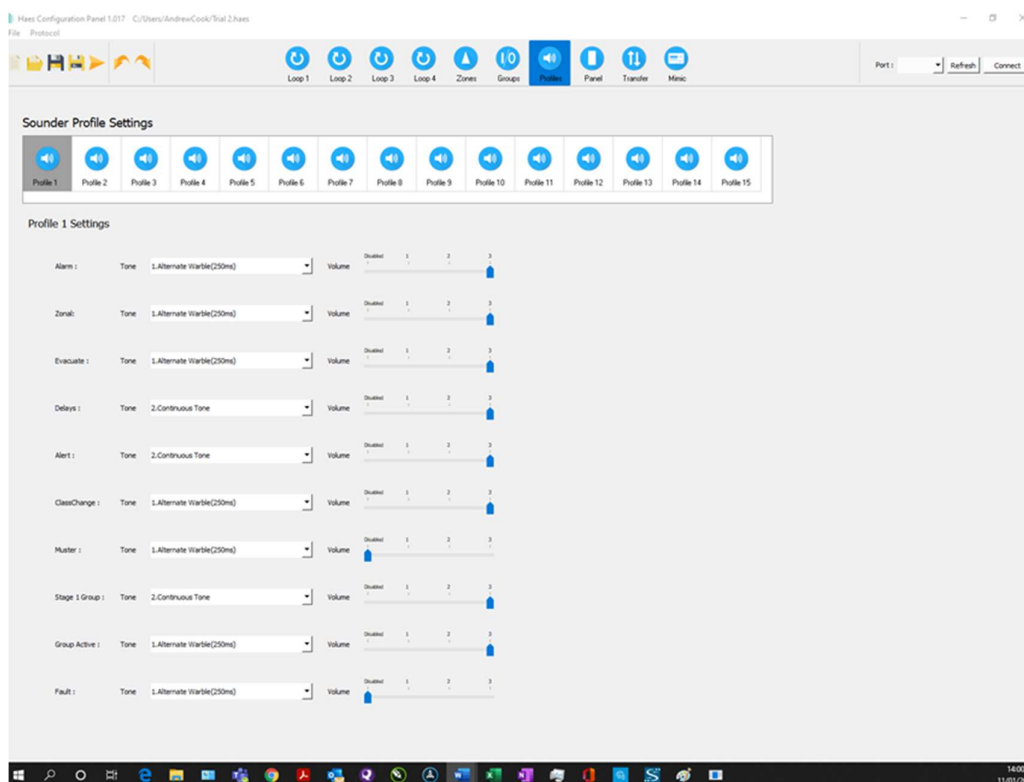


## Group Setup Page

The Group Setup window is used to configure the devices allocated to the Loop(s) into Groups. It presents as four tables and a graphical display:

- a list of all devices allocated to the Loops, which can be filtered by:
  - Loop
  - Type
  - Device Name
  - Zone
  - Group
- List of All Groups, showing:
  - Group
  - Group Name
  - Number of Devices allocated to the Group.
- Input and Output devices for the selected Group, showing:
  - Loop
  - Address
  - Device type
  - Device Name
  - Zone
  - Group
- The graphical display on the right of the page displays either:
  - the devices allocated to the Group currently selected in the list of Groups; and can be used to configure each Group:
    - Name
    - Activation Mode (Disabled, Normal, 2 Stage, Coincident and Isolation)
    - Alarm Count (the number of input devices in a group that need to be in an alarm condition, before the output device triggers)
    - Delay Time (time delay between the input devices going into an alarm condition and the output devices triggering)
    - Latching
    - Tone Profile
  - or, on selection of a device in the Input or Output Device tables, a graphical view of the selected device, together with a table of information for the device selected (e.g. Address, Description, Part Number, Name, etc.), some of which is configurable (as previously seen in the Loop window).





## Panel

The Panel setup window displays the information set during New Panel Setup (Panel Name, Company, System, Address, Logo) and allows for configuration of the following conditions on the panel:

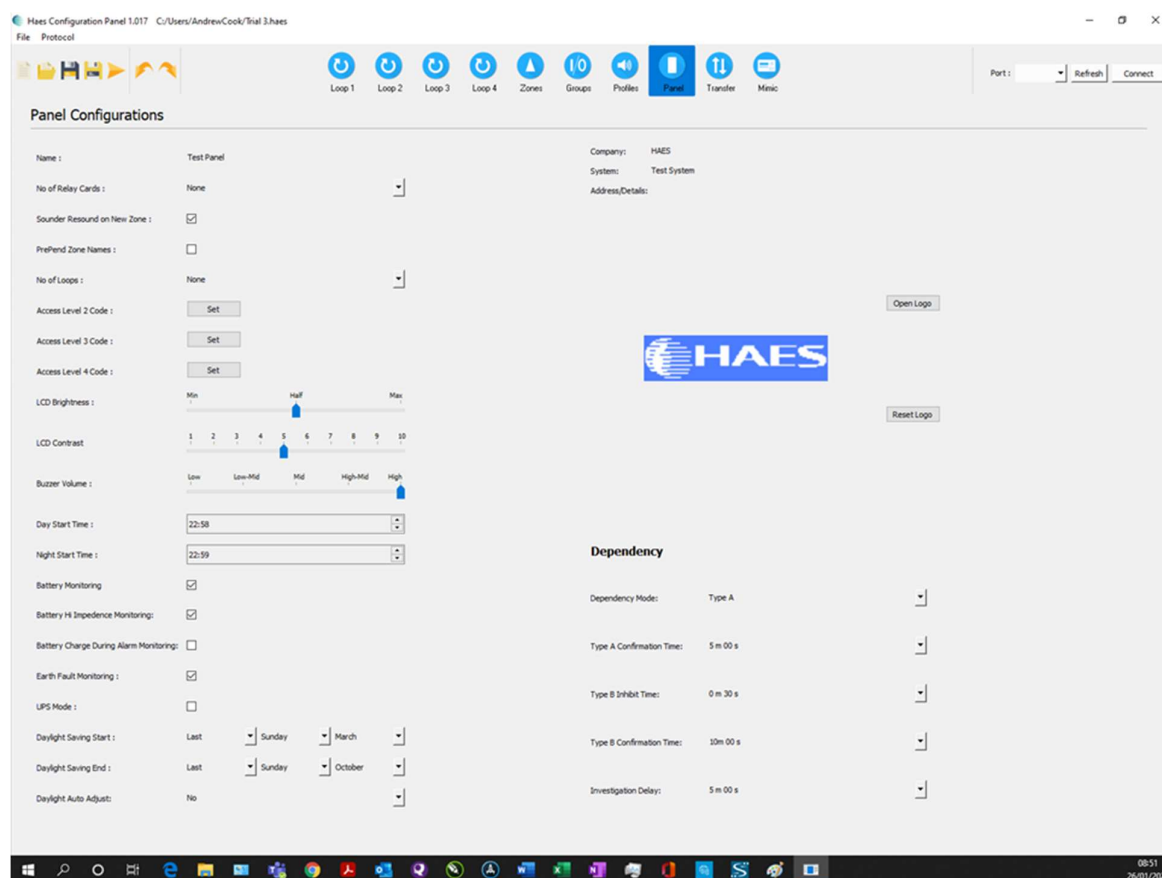
- No. of Relay Cards
- Sounder Resound on New Zone
- Pre-Pend Zone Names
- No of Loops
- Engineering Access Level Codes (Access Level 2, 3 and 4)
- LCD Brightness
- LCD Contrast
- Buzzer Volume
- Day Start Time
- Night Start Time
- Battery Monitoring
- Battery Hi Impedance Monitoring
- Battery Charge During Alarm Monitoring
- Earth Fault Monitoring
- UPS Mode



- Daylight Saving Start
- Daylight Saving End
- Daylight Auto Adjust

The Panel setup window can also be used to configure panel Dependency:

- Dependency Mode (Disabled, Type A, Type B, Type C and Delay)
- Type A Confirmation Time
- Type B Inhibit Time
- Type B Confirmation Time
- Investigation Delay

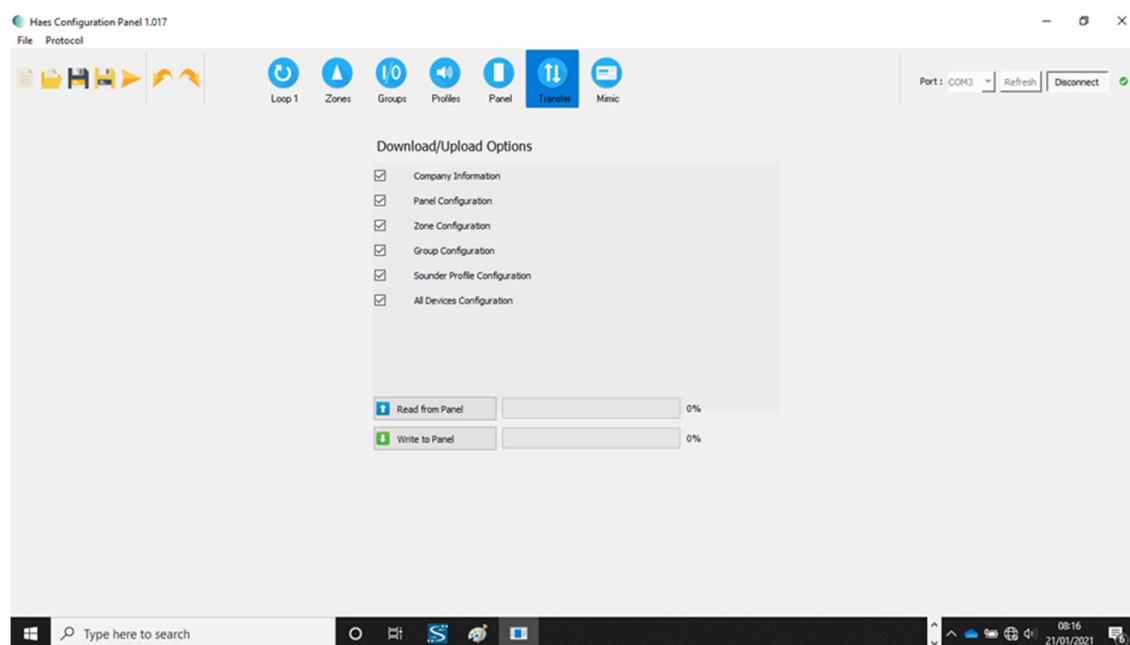


## Transfer

The Transfer setup window sets the Download/Upload options:

- Company Information
- Panel Configuration
- Zone Configuration
- Group Configuration
- Sounder Profile Configuration
- All Devices Configuration

Clicking the Read from Panel or Write to Panel button to begin data transfer. % of transfer completed will be displayed.



## Mimic

The Mimic button opens a graphical presentation of the panel controls, which mimics the panel's controls and LCD screen. The controls and display on the Mimic graphic are only operational whilst the Config Panel is connected to the fire control panel (connect button).



## INSTALLATION

Install the Haes Configuration Panel software on a laptop/tablet:

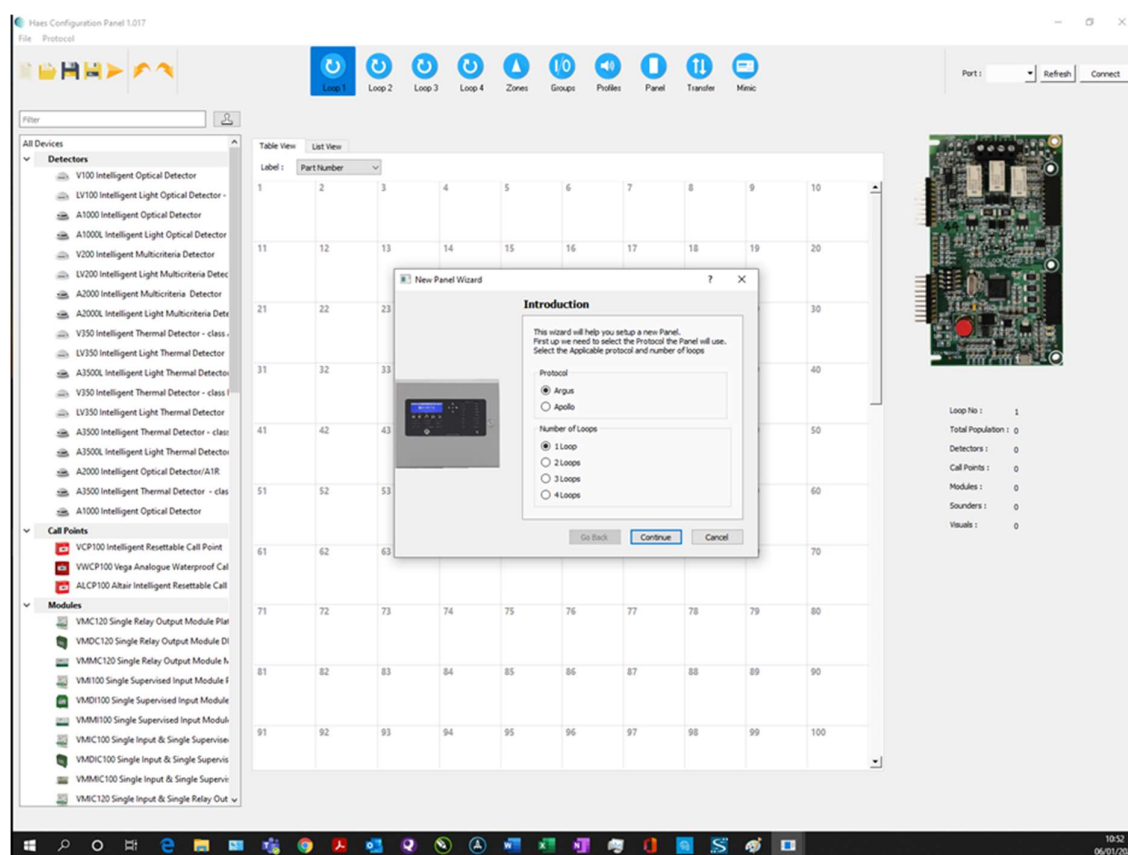
- From the Haes Website (<https://haes-tech.com>) navigate to the DOWNLOADS page.
- Download the installer.
- Follow the on-screen prompts.

## CONFIGURING THE SYSTEM

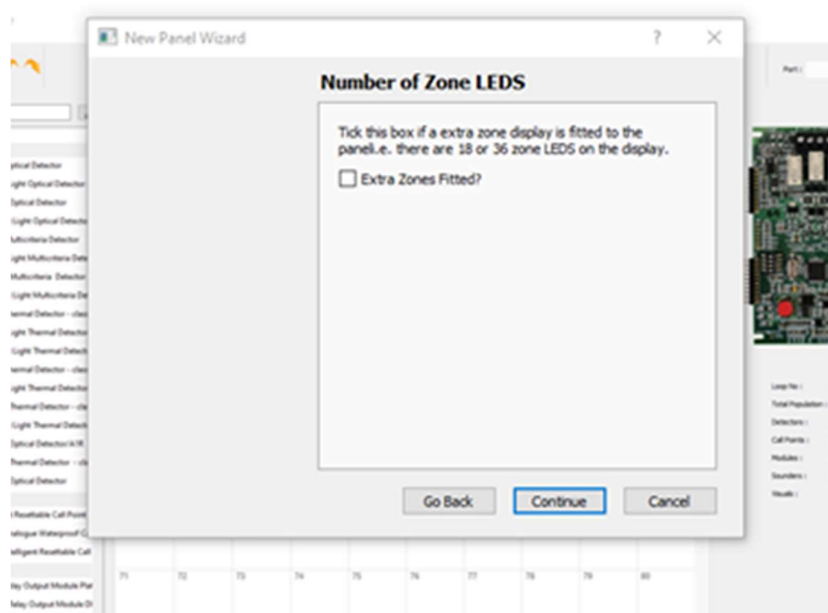
### New Panel Setup

To setup a new configuration for a panel:

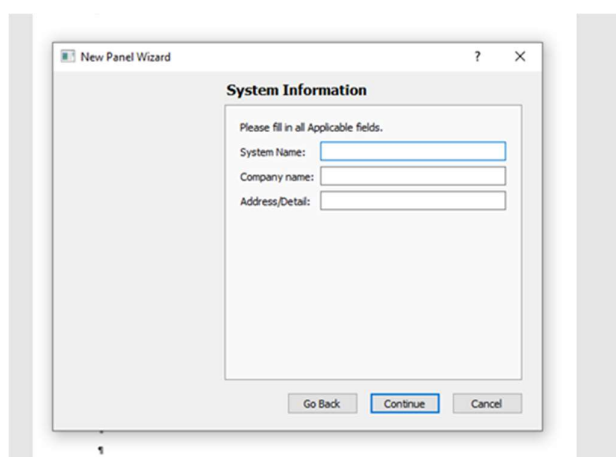
- Select New.
- New Panel Wizard dialog opens.
- Select Protocol (Argus/Apollo).
- Select Number of Loops (1 – 4).
- Click Continue.



- If configuring a 3 or 4 zone panel, with additional zone LEDs on the display (36 LEDs), click the Extra Zones Fitted? Checkbox.

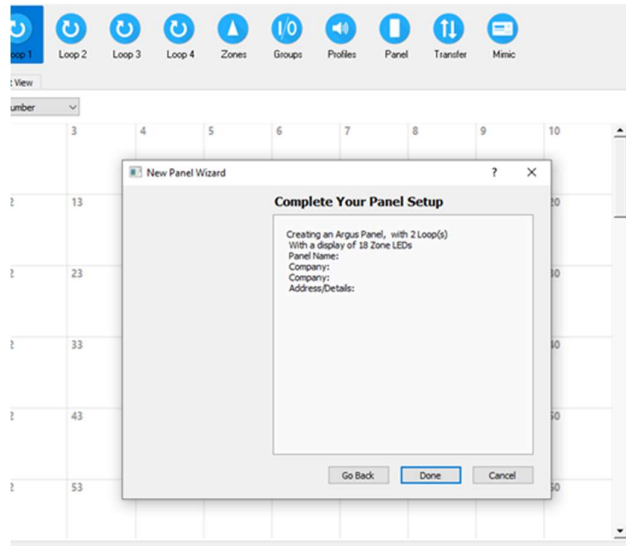


- Click Continue.
- To change the number of zones selected, or the protocol to be used, click Go Back.
- Complete the System Information fields (System Name/Company Name and Address/Detail).



- Click Continue.
- The Complete Your Panel Setup dialog will display the information entered for the panel setup.

- To change any information, click Go Back.
- To complete the initial setup of the panel information, click Done.




- To save the current configuration, at any time, click Save or Save As for new configurations.

## System Design

### Loop Setup

#### Populating a Loop

Using the setup page for each loop (Loop1, Loop 2, etc.), populate the Loop address tables with devices from the device list by:

- using the cursor to drag and drop individual devices, from the device list, onto the required address.
- If the same device is required in multiple addresses, select the device in the list and click the rubber stamp button  (next to the Filter dialog box). Click in each address where the device is required. To turn off the rubber stamp feature, simply click the stamp button again.
- Devices can be cut, copied, and pasted into another address, or deleted; by right-clicking the device address.

#### Configuring devices on a Loop

When the Loop has been populated with devices, by selecting a populated address the configuration graphical display, on the right of the screen displays the device at that address together with a table of information for configuring the individual device. The table differs between input and output devices and is the same as appears in Zone and Group views.

To configure the device, refer to Configuring devices in a Loop, Zone or Group.

## Zone Setup

### Populating a Zone

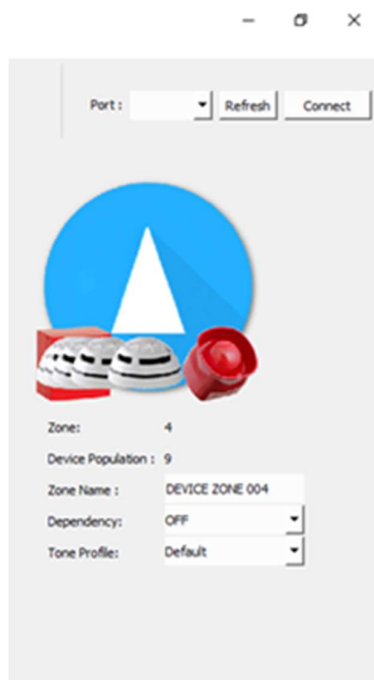
Devices allocated to loop addresses can be divided into Zones, either individually or in groups.

- Select device from the device list and drag-and-drop into the required Zone in the List of All Zones.
- To move multiple devices at the same time:
  - in the device list, select the first device.
  - press and hold Ctrl key and select the other required devices.
  - when all devices have been selected, release Ctrl key and drag-and-drop the devices into the required Zone on the List of All Zones.

### Configuring a Zone

Selecting a populated Zone in the List of all Zones, the Selected Zone Devices table shows the devices allocated to that Zone. The configuration graphic, on the right of the page, illustrates the Zone number and the Device Population of the Zone, together with three configurable attributes for the whole Zone:

- Zone Name
- Dependency (OFF/ON)
- Tone Profile (Default/Profile 1 to Profile 15)



### Configuring devices in a Zone

Selecting individual devices in the Selected Zone Devices table opens the configuration graphic for that device. The configuration graphical display provides a table of information for

configuring the individual device. The table differs between input and output devices and is the same as appears in Loop and Group views.

To configure the device, refer to Configuring devices in a Loop, Zone or Group.

## Groups Setup

### Forming devices into Groups

Devices allocated to loop addresses can be divided into Groups, either individually or in groups.

- Select a device from the device list and drag-and-drop into the required Group in the list of Groups.
- To move multiple devices at the same time:
  - in the device list, select the first device.
  - press and hold Ctrl key and select the other required devices.
  - when all devices have been selected, release Ctrl key and drag-and-drop the devices into the required Group in the list of Groups.

### Configuring a Group

Selecting a populated Group, from the list of Groups, displays all devices allocated to that Group in the two tables to the right of the list of Groups. The devices are split between input devices, in the top table, and output devices in the lower table. Dual use devices, such as detectors with a sounder base appear in both tables. The configuration graphic, on the right of the page, illustrates the Group number and the Device Population of the Group, together with six configurable attributes for the whole Group:

- Group Name
- Activation Mode:
  - Disabled
  - Normal
  - 2 Stage
  - Coincident
  - Isolation
- Alarm Count (the number of input devices in the Group that need to be activated, before the Group output devices are triggered to sound the alarm)
- Delay time (the amount of time, in seconds, to elapse between the last input device in the Group being triggered and the Group output device(s) responding)
- Latching checkbox
- Tone Profile (for the output device(s)):
  - Default
  - Profile 1 to 15





To configure the device, refer to [Configuring devices in a Loop, Zone or Group](#).

Selecting individual devices (or multiple devices of the same type) in either the Loop addresses, Selected Zone Devices list or the Group input and output device tables opens the configuration graphic for that device. The configuration graphical display provides a table of information for configuring the device type. The table differs between input and output devices and is the same in Loop, Zone and Group views.

- in the device list, select the first device.
- press and hold Ctrl key and select the other required devices.
- when all devices have been selected, release Ctrl key.

The device configuration graphical display provides a table of information for configuring the selected device. The table differs between input and output devices:

- Input device (Call Point, Detectors and detector sounder base output device, input modules, etc.):
  - Read
  - Write
  - Address
  - Description
  - Part Number
  - Type
  - Subtype
  - Zone (1 to 36)
  - Input Groups (checkboxes for Groups 1 to 64)  
and/or
  - Output Groups (checkboxes for Groups 1 to 64)
  - Name
  - Day Sensitivity drop-down:
    - Sensitivity 1 - 4
  - Night Sensitivity drop down:
    - Sensitivity 1 - 4
  - Detector Base:
    - Standard Base
    - Sounder Base (opens the following output controls):
      - Alarm Response (Output Off/Tone A/Tone B)
      - Zonal Response (Output Off/Tone A/Tone B)
      - Evac Response (Output Off/Tone A/Tone B)
      - Delay Response (Output Off/Tone A/Tone B)
      - Group Response (Output Off/Tone A/Tone B)
      - Stage Response (Output Off/Tone A/Tone B)
      - Alert Response (Output Off/Tone A/Tone B)

- Class Change (Output Off/Tone A/Tone B)

- Sounder Profile:

- Default/Profile 1 to 15

and

- Enable/Disable

Note: The output attributes for the individual device (Alarm Response to Class Change) are disabled if the Sounder Profile is set to Enable.

- Multitone Sounder Base (opens Sounder Base output controls, above, plus the following):

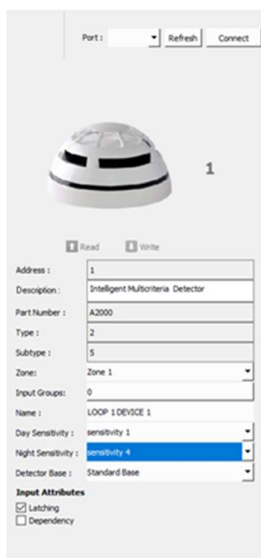
- Tone A (1.Alternate Warble(250ms) to 31.FP1063.1 – Telecom)
  - Tone B (automatically applied, depending on setting of Tone A)
  - Volume (Disabled/Volume 1/Volume 2/Volume 3)

- Input Attributes checkboxes:

- Latching
  - Dependency

- Output Responses checkbox:

- Silenceable




- Output device (Beacons, Sounders, output module, etc.):

- Read
  - Write
  - Address
  - Description

- Part Number
- Type
- Subtype
- Zone
- Input Groups
- and/or
- Output Groups
- Name
- Alarm Response (Output Off/Tone A/Tone B)
- Zonal Response (Output Off/Tone A/Tone B)
- Evac Response (Output Off/Tone A/Tone B)
- Delay Response (Output Off/Tone A/Tone B)
- Group Response (Output Off/Tone A/Tone B)
- Stage Response (Output Off/Tone A/Tone B)
- Alert Response (Output Off/Tone A/Tone B)
- Class Change (Output Off/Tone A/Tone B)
- Sounder Profile:
  - Default/Profile 1 to 15
  - and
  - Enable/Disable

Note: The output attributes for the individual device (Alarm Response to Class Change) are disabled if the Sounder Profile is set to Enable.

Port:  Refresh Connect

 1

Address: 16

Description: Vega Wall Sounder(3 tones),Beacon

Part Number: VLS100-AV

Type: 15

Subtype: 0

Zone: Zone 1

Output Groups: 0

Name: LOOP 1 DEVICE 16

Alarm Response: Tone A

Zonal Response: Tone A

Evac Response: Tone A

Delay Response: Tone B

Group Response: Tone A

Stage Response: Tone B

Alert Response: Tone B

Class Change: Tone A

Sounder Profile: Default Enable

**Output Responses**

☒ Silenceable

- The Read and Write controls are used to transfer configuration data to or from the fire control panel, for the individual device.

## Profiles

Click Profiles in the toolbar to open the Sounder Profile Settings window. This window is used to configure the Tone (1.Alternate Warble(250ms) to 31.FP 1063.1 – Telecom) and Volume of the following sounder outputs, for each of the 15 Sounder profiles:

- Alarm
- Zonal
- Evacuate
- Delays
- Alert
- ClassChange
- Muster
- Stage 1 Group
- Group Active
- Fault

## Panel

Panel Configurations window allows for the configuration of the following panel settings:

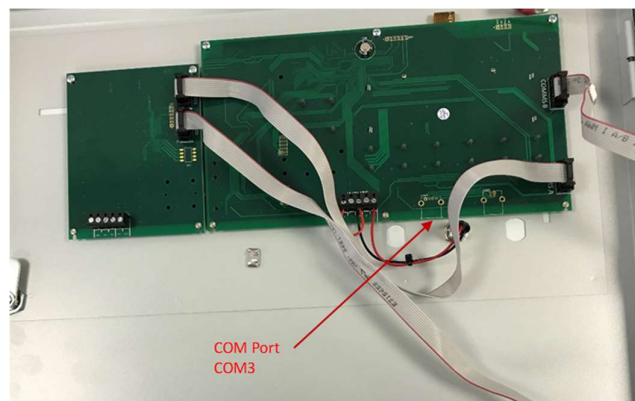
- Name
- No of Relay Cards
- Sounder Resound on New Zone checkbox
- PrePend Zone Names
- No of Loops
- Access Level 2 Code
- Access Level 3 Code
- Access Level 4 Code
- LCD Brightness
- LCD Contrast
- Buzzer Volume
- Day Start Time
- Night Start Time
- Battery Monitoring
- Battery Hi Impedence Monitoring
- Battery Charge During Alarm Monitoring
- Earth Fault Monitoring
- UPS Mode
- Daylight Saving Start:
  - First/Second/Third/Fourth/Final
  - Monday to Sunday
  - January to December
- Daylight Saving End:
  - First/Second/Third/Fourth/Final
  - Monday to Sunday
  - January to December
- Daylight Auto Adjust:
  - Yes/No
- Company
- System
- Address/Details

- Logo:
  - Open Logo
  - Reset Logo
- Dependency Mode:
  - Disabled
  - Type A
  - Type B
  - Type C
  - Delay
- Type A Confirmation Time:
  - 0m 30s to 10m 00s (in 30s increments)
- Type B Inhibit Time:
  - 0m 30s to 4m 00s (in 30s increments)
- Type B Confirmation Time:
  - 5m 00s to 15m 00s (in 30s increments)
- Investigation Delay:
  - 0m 30s to 10m 00s (in 30s increments)

## Transfer

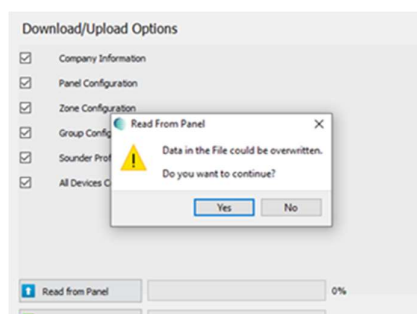
To transfer configuration data to/from the panel:

- Open panel and connect USB cable to the COM3 USB Port on the display card.

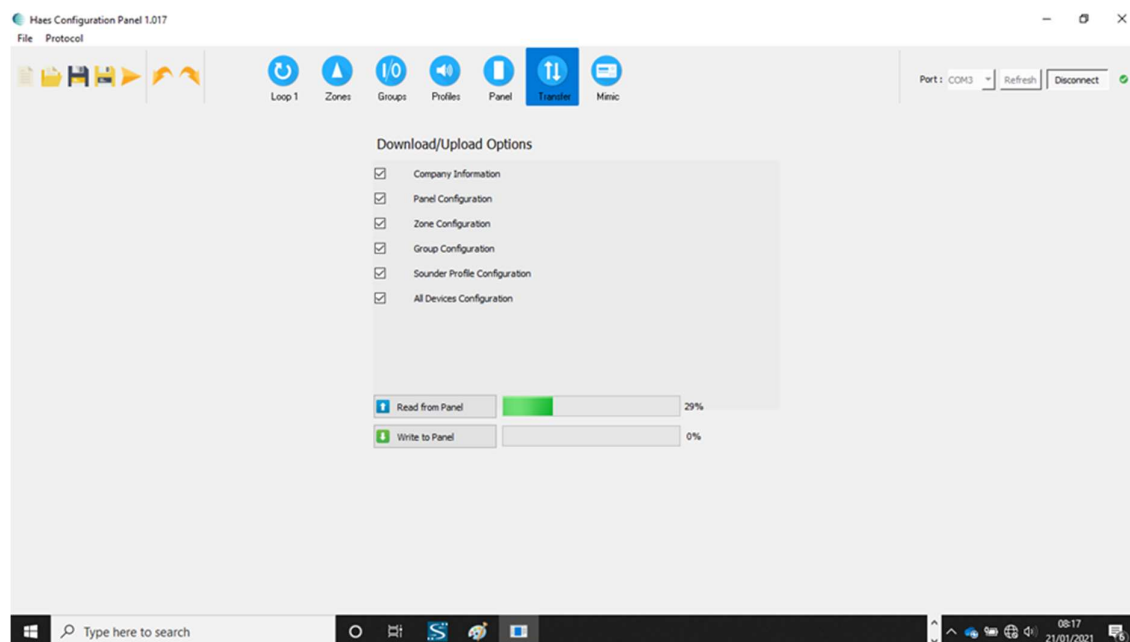


- Ensure panel is turned on.
- Select Transfer button on the toolbar.
- Click Refresh to populate the list of available COM Ports
- Click Connect to connect the Config Panel sw to the control panel's display card.
- Configure the data to be transferred by selecting required checkboxes:

- Company Information
- Panel Configuration
- Zone Configuration
- Group Configuration
- Sounder Profile Configuration
- All Devices Configuration
- Begin the transfer of data to/from the panel by clicking the appropriate control:
  - Read from Panel
  - Write to Panel
- A Read From Panel, or Write To Panel, dialog will open, warning of data being overwritten.



- Click Yes to continue with download/upload.
- Progress for the transfer will be displayed by the progress bars.





- On completion of data transfer:
  - Click Disconnect.
  - Remove USB connection from display card.

Any differences between the config transferred to the panel and the Loops/devices connected to the panel will initiate a Fault on the panel, accompanied by Illumination of the General Fault LED, together with illumination of any other appropriate fault LED (System Fault, Sounders, etc.), and a fault warning tone being audible.



Any such differences/conflicts should be addressed, either on the Configuration Panel sw, prior to uploading to the panel, or directly on the control panel, using the Config menus.

## Mimic

Clicking the Mimic button in the toolbar opens a virtual repeater of the panel controls and LCD display. Whilst the Configuration software is connected to the panel, the menu navigation and sounder/buzzer control buttons on the Mimic display control the panel in the same way as the panel's actual controls.





[www.haes-tech.com](http://www.haes-tech.com)