



ESPRIT - ADDRESSABLE FIRE CONTROL PANEL CONFIGURATION SOFTWARE USER MANUAL

This manual covers the programming of the one to two loop and one to four loop Esprit-Argus & Apollo Addressable fire alarm control panels, using the Haes Configuration Panel software.

SAFETY

IMPORTANT NOTICE

PLEASE READ THIS MANUAL CAREFULLY AND OBSERVE ALL ADVICE GIVEN WITHIN IT.
THIS PARTICULARLY APPLIES TO THE PRECAUTIONS NECESSARY TO AVOID ELECTRO-STATIC DISCHARGE



Important Safety Notes

The panel is safe to operate provided it has been installed in compliance with the manufacturer’s instructions and used in accordance with this manual.

Hazardous voltages are present inside the panel—DO NOT open it unless you are qualified and authorised to do so. There is no need to open the panel’s enclosure except to carry out commissioning, maintenance and remedial work. This work must only be carried out by competent service personnel who are fully conversant with the contents of the panel’s installation manual and have the necessary skills for maintaining this equipment.

This fire alarm system requires periodic checks as specified in the local regulations. It is the responsibility of the system user to ensure it is regularly serviced and maintained in good working order.

The product must be installed, commissioned and maintained for operation in accordance with the instructions and the applicable wiring codes of practice and national standard regulations for fire systems appropriate to the country and location of the installation.

This equipment is designed to be operated from 230VAC 50/60 Hz mains supplies and is of Class I construction. As such it must be connected to a protective earthing conductor in the fixed wiring of the installation. Failure to ensure that all conductive accessible parts of this equipment are adequately bonded to the protective earth will render the equipment unsafe.

Disclaimer

No responsibility can be accepted by the manufacturer or distributors of this fire alarm panel for any misinterpretation of an instruction or guidance note or for the compliance of the system as a whole. The manufacturer’s policy is one of continuous improvement and we reserve the right to make changes to product specifications at our discretion and without prior notice. E & O E.

Warnings


	<p>Before installation, refer to the Ratings shown on the label inside the product and to the ‘Specifications Chart’ in this document. If you are unclear on any point, please DO NOT proceed. Contact the manufacturer or supplier for clarification and guidance.</p> <p>Only Trained service personnel should undertake the Installation, Programming and Maintenance of this equipment.</p>
--	---

TABLE OF CONTENTS

SAFETY	2
IMPORTANT NOTICE	2
Important Safety Notes	2
Disclaimer	2
Warnings.....	2
TABLE OF CONTENTS	3
PRODUCT OVERVIEW	4
General	4
System Requirements	4
HAES CONFIGURATION PANEL	5
Description	5
Definitions	5
Toolbar	6
Loop Setup.....	7
Zones Setup.....	11
Groups Setup	13
Output Profiles	15
Panel	17
Network.....	20
Transfer	23
Mimic.....	25
INSTALLATION.....	26
CONFIGURING THE SYSTEM	26
New Panel Setup.....	26
System Design	29
Loop Setup	29
Populating a Loop	29
Configuring devices on a Loop	29
Zone Setup	29
Populating a Zone	29
Configuring a Zone.....	29
Configuring devices in a Zone	30
Groups Setup.....	30
Forming devices into Groups.....	30
Configuring a Group	30
Configuring devices in a Loop, Zone or Group	32

PRODUCT OVERVIEW

General

Quality, reliability, ease of use and feature rich are attributes that are consistent across the entire range of Haes fire alarm control panels. The ESPRiT Addressable panels encompass all these attributes, to provide the fire alarm engineer's panel of choice.

For the fire alarm engineer, the panel has been designed to be easy to install and to minimise labour costs, by providing ample room for tasks such as wiring and changing batteries. Activation is via key switch or access code, which means you should always be able to work on the panel and the one man walk tests will help reduce the cost of maintaining the fire alarm system.

ESPRiT Addressable fire control panels are designed to be intuitive and flexible for the fire alarm engineer to programme and incorporates a large 240 x 64-pixel graphical display, with an easy-to-navigate menu system, which uses simple discernible icons in each section.

Simplicity is one of the most important aspects when considering the end user of a fire alarm panel. The easy-to-read control panel, with its graphical LCD display and five marked control buttons, and the 3-step silence functionality gives non-technical people the confidence to correctly manage their fire alarm system.

All inputs and outputs are fully programmable and there are options to have delays to the outputs. The programming features also include 3 different modes to help reduce false alarms. Local fire authorities are demanding this type of functionality to reduce unwanted callouts from alarm receiving centres.

As an addressable panel, signals from detectors, manual call points or any other devices are individually identified at the control panel's LCD graphical display. In addition, the control panel LED indicators will provide a simple 'at a glance' overview of which zone or zones have gone into the alarm condition, showing the extent of fire or smoke spread.

The panel supports connections for up to a maximum of eight main panels and eight repeaters, via an RS-485 Network.

ESPRiT Addressable panels are approved to European standards EN54-2 & 4, Fire Detection and Alarm Systems – Control & Indicating Equipment.

This product has been designed and manufactured in the United Kingdom.

The Haes Configuration panel software enhances the ease of programming for the panel by enabling the engineer to both download existing panel configurations for amendment, or programme new panel configuration 'off panel' before uploading onto the panel. Programming of the configuration uses easy to follow graphical depictions of devices, Loops, Zones and Groups.

System Requirements

The Haes Configuration Panel software is designed for use with Windows 7 and Windows 10 Operating System. It is not intended for use with Apple macOS, Android or Linux OS.

The following are required:

- Laptop or Tablet device running Windows 7 or Windows 10 OS with i5 processor or equivalent, operating at 1.6GHz and a minimum of 16GB on board ram.
- Cable with a USB-B connector.

HAES CONFIGURATION PANEL

Description

The Haes Configuration Panel software allows the fire system engineer to configure the Haes Technologies Esprit addressable fire control panel (Argus and Apollo protocol), and the wider system and attached devices, using a laptop or tablet device, before downloading the configuration to the panel.

The configuration software also allows the engineer to upload previously created configuration, from the panel, to enable easier modification of the configuration (from individual devices, to the whole system).

The Configuration Panel software toolbar opens a range of Setup windows, on which the configuration can be designed, and the data can be transferred to/from the Esprit panel.

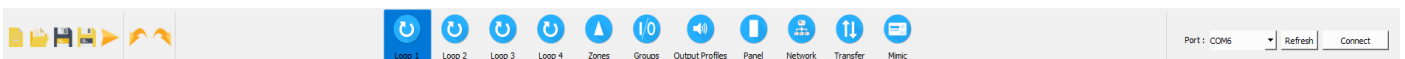
Note: If any new devices are added to any loop using the configuration software, the download to the panel must be followed by the learn process started from the menu system of the panel itself to allow the panel to confirm that the configuration matches the actual devices attached to the loops.

Definitions

The following terms are used in the setup of the system:

- Loop – an addressable communications bus, to which input and output devices are attached.
- Zone – a selection of input and output devices (possibly, but not necessarily, in a single geographical location). Note - devices from more than one loop may be allocated in a zone.
- Group – a collection of input and output devices (e.g. detectors and sounders) that are related by a cause and effect definition. The devices in a group may or may not be in the same geographical location (e.g. input devices within a group may be in room/building A, whilst the output devices may be in room/building B, to enable a warning to be given in building B that an incident is occurring in building A). When the defined input conditions for the group have been met, the group becomes activated and the output and sounder devices in the group activate their defined output response.


- New - open a new configuration file.
- Open - open a saved configuration file.
- Save – saves changes made to the current configuration file.
- Save as – save the current configuration file to a drive location.
- Export – export the open configuration file to another user/drive location.
- Undo/Redo – undo/redo the last step.
- Loop 1/Loop 2 etc. – Loop setup, for allocating devices to addresses on each Loop and configuring the devices individually.
- Zones – Zone setup, for configuring the Zones and individual devices in a Zone.
- Groups – Group setup, for allocating devices to a Group and configuring individual devices in a Group, including the input and output conditions.
- Output Profiles – output profile setup for configuring the various tones required for a sounder.
- Panel – panel configuration setup page. For configuring the panel (e.g. LCD brightness, time, buzzer volume, logo, dependency mode, etc.).
- Network – network configuration setup to define inter-panel behaviour.
- Transfer – transfers the populated configuration file to the panel.
- Mimic – displays a graphic of the control panel.
- Port: - The Port settings are to configure which COM port is to be used to communicate with the panel. The drop-down is only populated with COM ports that are available. These are added to the drop-down when the cable is connected.
- Refresh – refreshes the COM port connection.
- Connect/Disconnect – establishes the connection between the portable computing device and the panel, ready for the transfer of the configuration file and breaks the connection when finished transferring data files. The type of panel connected must match the type defined in the configuration data. This is set when a new file is created or when an existing file is loaded.

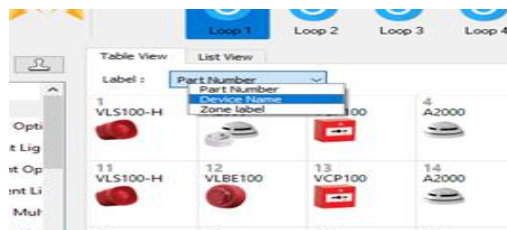


Loop Setup

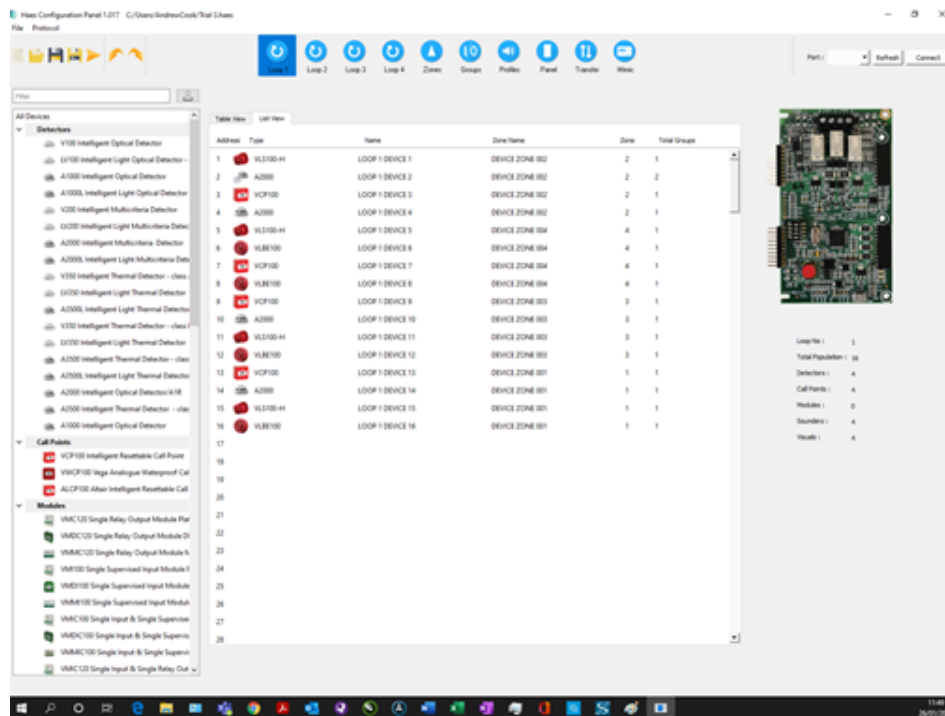
The Toolbar displays Loop setup buttons (Loop 1, Loop 2, etc., depending on the number of loops selected in the initial panel setup), for accessing the Loop setup window.

The Loop setup window is used for allocating devices to addresses on the Loop and for configuring individual devices. The Loop setup window is made up of:

- a list of All Devices (Detectors, Call Points, Sounders, etc.), that are compatible with the chosen protocol (Argus/Apollo), together with a Filter box for narrowing the device selection and a 'Rubber Stamp' button  for inserting multiple copies of a given device into the device address table.
- a device address table, which displays the devices allocated to each address on the Loop (240 addresses per loop), which can be displayed in either Table View or List View:
 - in Table View, the loop is displayed as a grid, with a graphic of the device and a label to identify it. The device label for all devices displayed in the grid can be changed, using the Label: drop-down at the top of the window, to display:
 - Part Number
 - Device Name
 - Zone Label

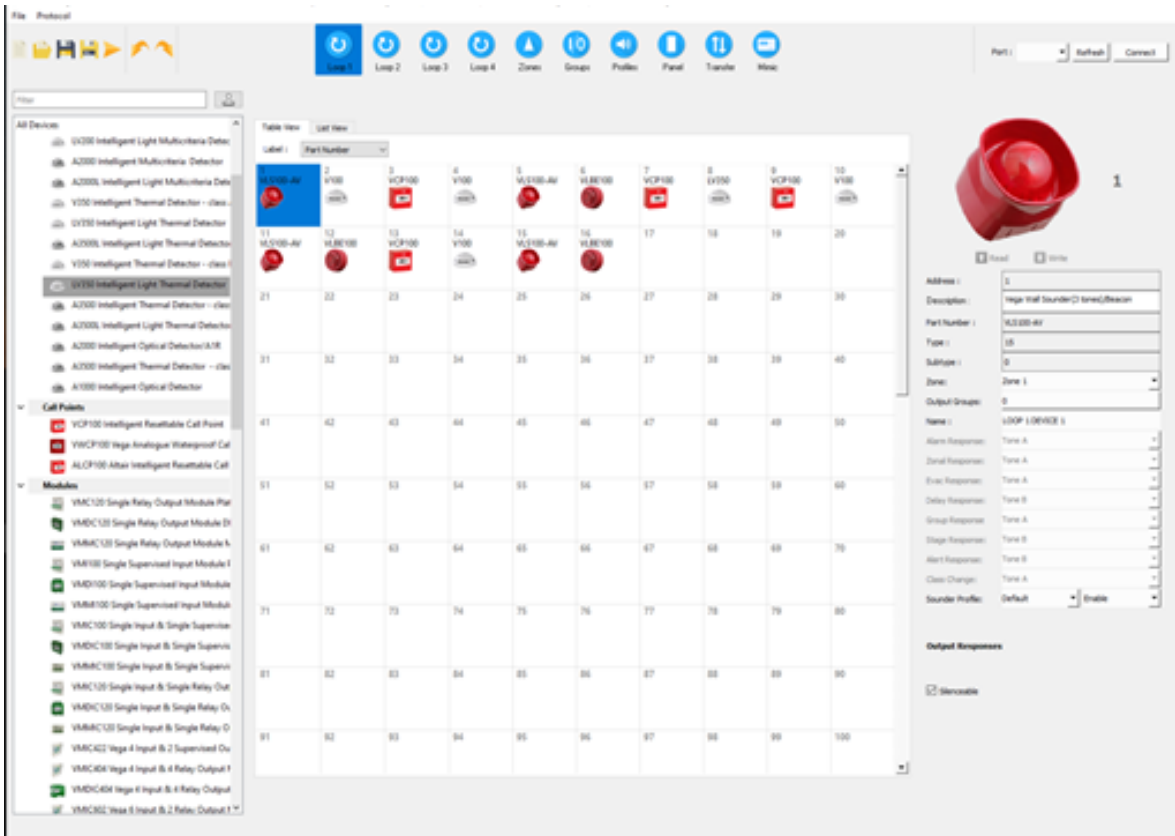


- in List View, the loop is displayed as a list table showing a graphic of the device at each address, together with:
 - Address
 - Type
 - Device Name
 - Zone Name
 - Zone
 - Total Groups



- a graphical view of either:
 - the Loop Card, showing the Loop No., Total Population of devices connected to the loop, number of each device type (detectors, call points, Modules, sounders, and visuals),
 - or, on selection of a device in either Table View or List View, a graphical view of the selected device at that address together with a table of information for the device (which differs between input and output devices), some of which is configurable for the individual device:
 - Input device (Call Point, Detectors, etc.):
 - Address
 - Description
 - Part Number
 - Type
 - Subtype
 - Zone
 - Input Groups
 - and/or
 - Output Groups
 - Name
 - Day Sensitivity*
 - Sensitivity 1 - 4
 - Night Sensitivity*
 - Sensitivity 1 - 4
 - Detector Base*

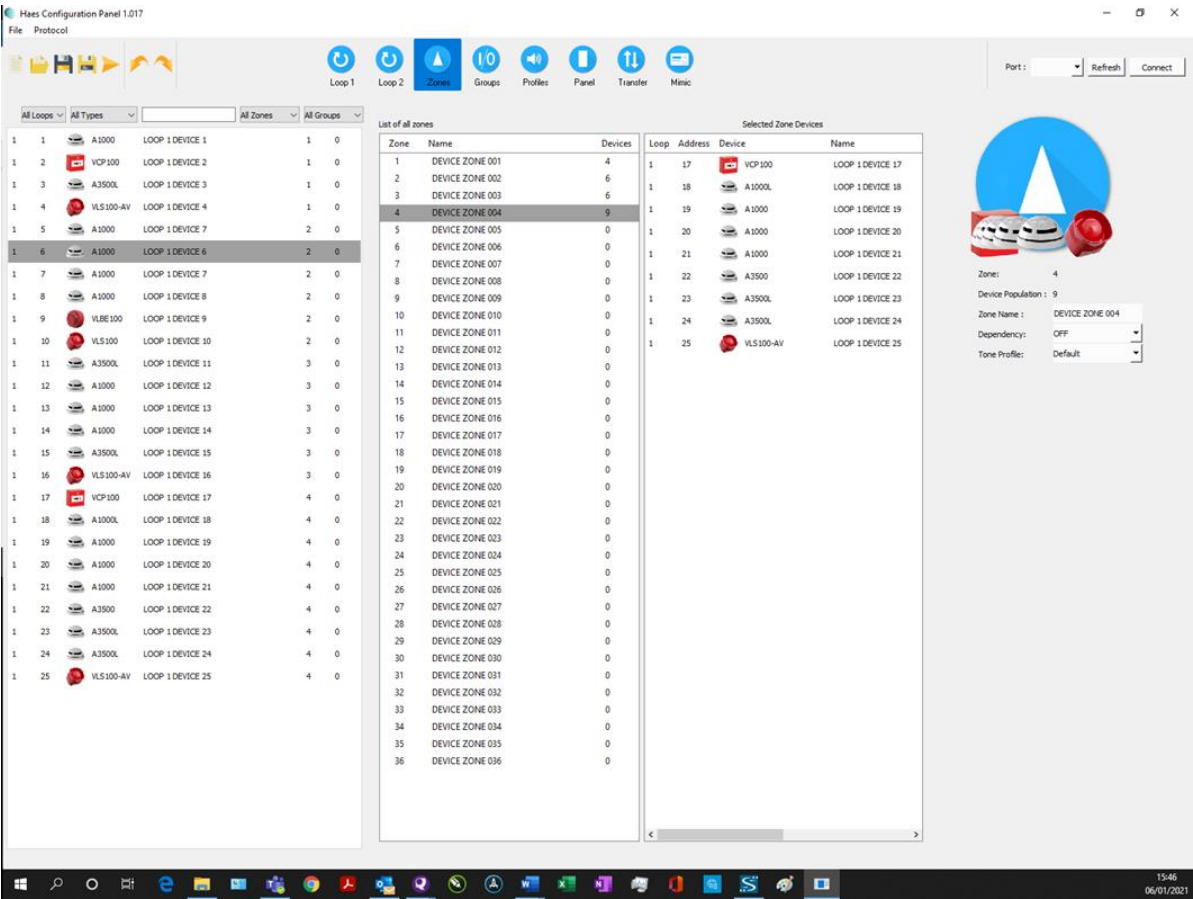
- Standard Base
 - Sounder Base¹
 - Multitone Sounder Base²
- Input Attributes (Latching, Non-Alarm and Dependency* checkboxes)
- Output Responses
- Output device (Beacons, Sounders/Detector Sounder Base, etc.):
 - Address
 - Description
 - Part Number
 - Type
 - Subtype
 - Zone
 - Input Groups
 - and/or
 - Output Groups
 - Name
 - Outputs (Output Off/Tone A/Tone B):
 - Alarm Response
 - Zonal Response
 - Evac Response
 - Delay Response
 - Group Response
 - Stage Response
 - Alert Response
 - Class Change
 - Sounder Profile



Zones Setup

The Zones window is used to configure the Zones and the devices within the Zones. It presents three tables and a graphical display detailing:

- a list of all devices allocated to the Loops, which can be filtered by:
 - Loop
 - Type
 - Device Name
 - Zone
 - Group
- List of All Zones, showing:
 - Zone
 - Device Name
 - Number of Devices allocated to the Zone
- Selected Zone devices, a list of all devices in the Zone selected in the List of All Zones table
- The graphical display on the right of the page displays either:
 - the devices allocated to the Zone currently selected in the List of All Zones; and can be used to configure each Zone:
 - Name
 - Dependency
 - Tone Profile
 - Intrinsically safe
 - Shared (When selected, this zone is shared with other networked panels which also have the same zone number shared, allowing cross panel zone activation.)
 - or, on selection of a device in the Selected Zone Devices table, a graphical view of the selected device, together with a table of information for the device selected (e.g. Address, Description, Part Number, Name, etc.), some of which is configurable (as previously seen in the Loop window.



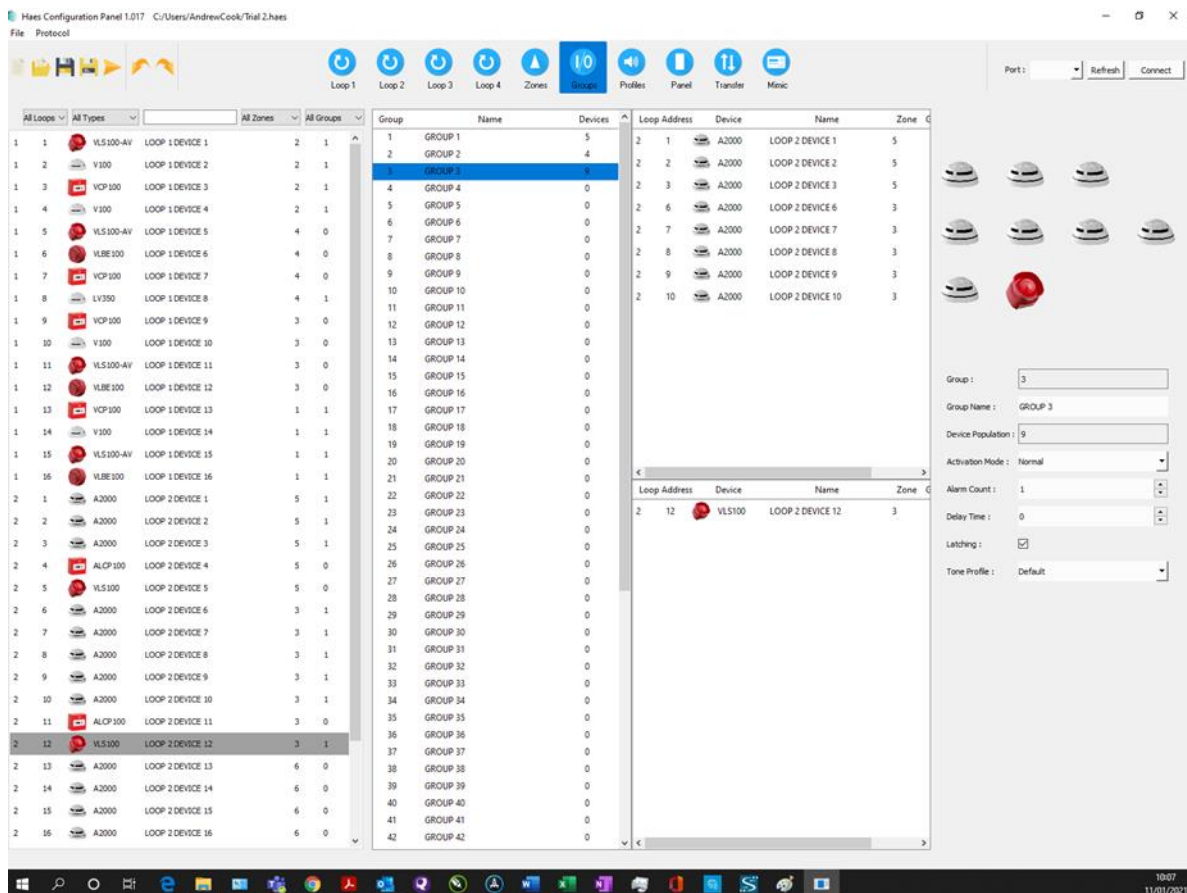
Groups Setup

Each loop device can belong to any number of 128 groups. Active input devices can activate the groups to which they belong determined by the configuration of the group. When a group is activated, all the output devices in the group follow the group settings in their selected output profile unless a setting with a higher priority is activated such as a general or zonal alarm.

The Group Setup window is used to configure the devices allocated to the Loop(s) into Groups. It presents as four tables and a graphical display:

- a list of all devices allocated to the Loops, which can be filtered by:
 - Loop
 - Type
 - Device Name
 - Zone
 - Group
- List of All Groups, showing:
 - Group
 - Group Name
 - Number of Devices allocated to the Group.
- Input and Output devices for the selected Group, showing:
 - Loop
 - Address
 - Device type
 - Device Name
 - Zone
 - Group
- The graphical display on the right of the page displays either:
 - the devices allocated to the Group currently selected in the list of Groups; and can be used to configure each Group:
 - Name
 - Activation Mode (Disabled, Normal, 2 Stage, Coincident and Isolation)
 - Disabled – Group activations are disabled.
 - Normal – Any device activation will activate the group.
 - 2 Stage – The first device activation will cause a partial activation of the group and the stage setting in the output profile is used. A second and subsequent activations will cause a full activation to occur.
 - Coincident – The number of active input devices in the group must equal or exceed the alarm count setting for the group to become active.
 - Isolation – The activation of a non-alarm input device will disable all other devices in the group, both input and output devices.
 - Alarm Count (the number of input devices in a group that need to be in an alarm condition, before the output device triggers)

- Delay Time (Time delay between the input devices going into an alarm condition and the output devices triggering.)
 - Latching (When selected, this group will remain activated after the triggering condition is no longer met. A reset is needed to clear the activation.)
 - Shared (When selected, this group is shared with other networked panels which also have the same group number shared, allowing cross panel behaviour.)
 - Tone Profile (The group and stage settings of this profile are used when this group is activated.)
- or, on selection of a device in the Input or Output Device tables, a graphical view of the selected device, together with a table of information for the device selected (e.g. Address, Description, Part Number, Name, etc.), some of which is configurable (as previously seen in the Loop window.

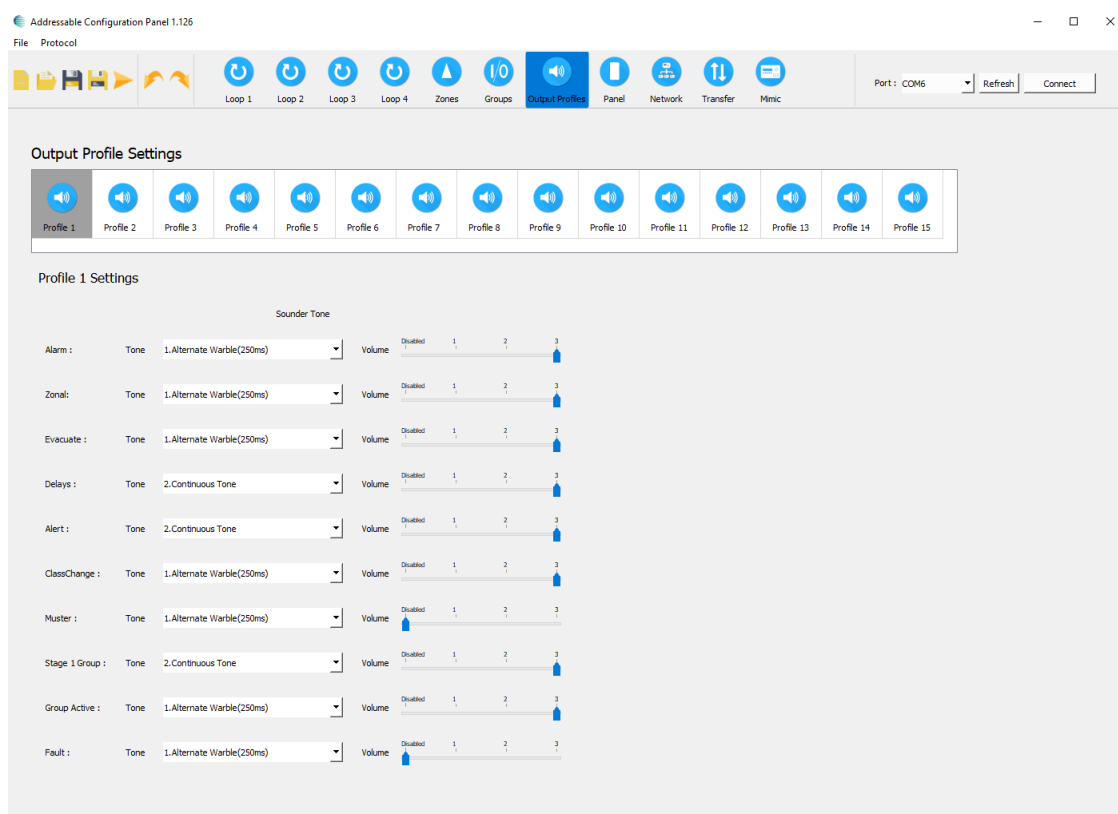


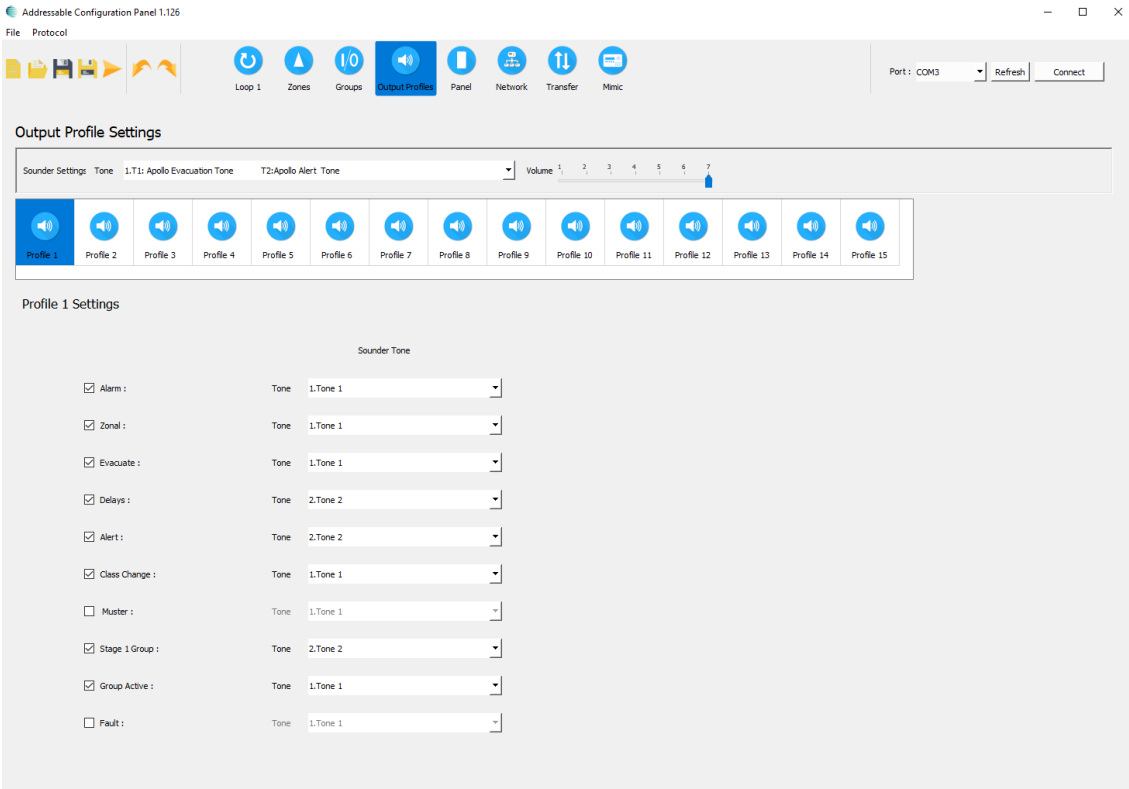
Output Profiles

The behaviour of the panel outputs is determined by allocating 1 of 15 output profiles to each device. Each profile is a set of output levels for the different types of status activation. The default profile for all devices is profile 1. Therefore, if all output devices are to behave the same, only this profile must be defined. If a group of outputs need to behave differently to the rest, another profile can be defined with the different settings and assigned to each of the devices in the group.

This page is used to configure the Tone and Volume of sounders assigned to a particular profile. Relay devices can also be assigned to a profile, in which case, with Argus panels, a volume of zero is interpreted as OFF and a non-zero volume is ON, and with Apollo panels the checkbox defines the OFF/ON behaviour. Each profile has a setting for the following statuses:

- Alarm - An output device uses this setting when all active alarms are not in the zone associated with the device.
- Zonal - An output device uses this setting when an alarm is active in the zone associated with the device.
- Evacuate – An output device uses this setting when an evacuate is active.
- Delays – An output device in a group with Delay active or any delayed alarm uses this setting.
- Alert – An output device uses this setting when the Pulse input is active.
- Class Change – An output device uses this setting when the Class Change input is active.
- Muster – An output device uses this setting when the muster state is active.
- Stage 1 Group – An output device in a group with Stage 1 active uses this setting.
- Group Active – An output device in an active group uses this setting.
- Fault - An output device uses this setting when a fault state is active.





Panel

Panel Configurations window allows for the configuration of the following panel settings:

- Name
- No of Relay Cards
- Sounder Resound on New Zone checkbox
- Prepend Zone Names
- No of Loops
- Access Level 2 Code
- Access Level 3 Code
- Access Level 4 Code
- LCD Brightness
- LCD Contrast
- Buzzer Volume
- Day Start Time
- Night Start Time
- Battery Monitoring
- Battery Hi Impedance Monitoring
- Battery Charge During Alarm Monitoring
- Earth Fault Monitoring
- UPS Mode
- Daylight Saving Start:
 - First/Second/Third/Fourth/Final
 - Monday to Sunday
 - January to December
- Daylight Saving End:
 - First/Second/Third/Fourth/Final
 - Monday to Sunday
 - January to December
- Daylight Auto Adjust:
 - Yes/No
- Company
- System
- Address/Details

- Logo:
 - Open Logo
 - Reset Logo

The logo size is 128x32 in black and white as a bmp file format. This can be created in Paint and saved in Documents or Pictures as a bmp file.

As an example, see Haes Image below.



- Click on Open Logo
 - Select the saved logo and click open.
 - The logo will appear on the screen.
 - Transfer the logo using transfer function.
 - Logo will be transferred to connected panel.
- Dependency Mode:
 - Disabled
 - Type A
 - Type B
 - Type C
 - Delay
- Type A Confirmation Time:
 - 0m 30s to 10m 00s (in 30s increments)
- Type B Inhibit Time:
 - 0m 30s to 4m 00s (in 30s increments)
- Type B Confirmation Time:
 - 5m 00s to 15m 00s (in 30s increments)
- Investigation Delay:
 - 0m 30s to 10m 00s (in 30s increments)

Apollo Options (only when Apollo panel selected)

- Core Enabled Loop 1
- Core Enabled Loop 2
- Core Enabled Loop 3
- Core Enabled Loop 4
- Device Polling LED

Addressable Configuration Panel 1.126

File Protocol

Loop 1

Zones

Groups

Output Profiles

Panel

Network

Transfer

Mimic

Port: COM3

Refresh

Connect

Panel Configurations

Name :

Panel 1

No of Relay Cards :

None

Sounder Resound on New Zone :

☒

PrePend Zone Names :

☐

No of Loops :

1

Access Level 2 Code :

Set

Access Level 3 Code :

Set

Access Level 4 Code :

Set

LCD Brightness :

Min

Half

Max

LCD Contrast

1

2

3

4

5

6

7

8

9

10

Buzzer Volume :

Low

Low-Mid

Mid

High-Mid

High

Day Start Time :

6:00

Night Start Time :

18:00

Battery Monitoring

☒

Battery HI Impedence Monitoring:

☒

Battery Charge During Alarm Monitoring:

☐

Earth Fault Monitoring :

☒

UPS Mode :

☐

Daylight Saving Start :

Last

Sunday

March

Daylight Saving End :

Last

Sunday

October

Daylight Auto Adjust:

No

Company:

Company

System:

Address/Details:

Open Logo

Reset Logo

☒ Use Default Logo

Dependency

Dependency Mode:

Disabled

Type A Confirmation Time:

5 m 00 s

Type B Inhibit Time:

1 m 00 s

Type B Confirmation Time:

10m 00 s

Investigation Delay:

5 m 00 s

Apollo Options

☐ Core Enabled Loop1

☐ Core Enabled Loop2

☐ Core Enabled Loop3

☐ Core Enabled Loop4

☒ Device Polling LED

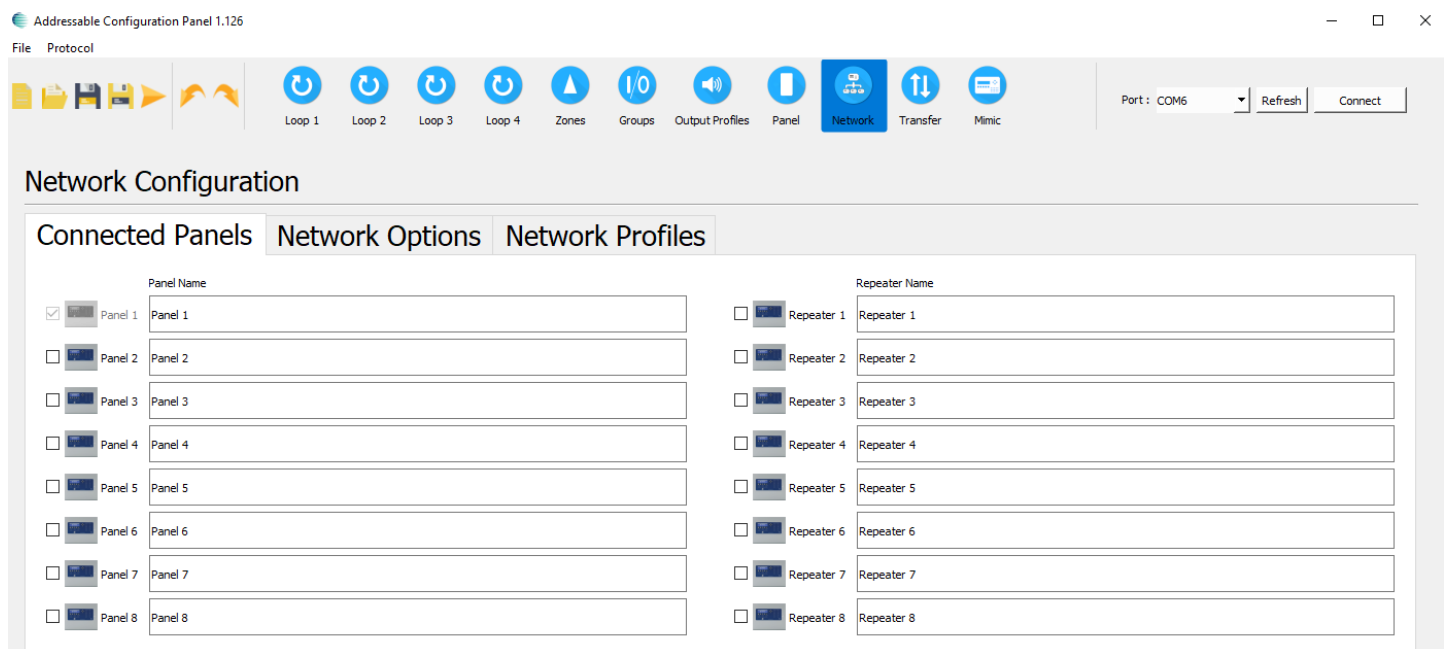
Network

The network allows up to 8 panels and 8 repeaters to be connected. Panel 1 is the master panel and must always be connected. The panels and repeaters can be given individual names. The configuration of the network has been designed to allow greater flexibility in determining which types of signals are transmitted and received by each panel and repeater. The outputs of each panel can be configured to behave differently depending on which panel the signal originated. The outputs triggered from local signals cannot be adjusted in this way and always follow the local settings.

The Network setup window is made up of three tabs:

a) Connected Panels

Defines which panels and repeaters are connected in the network and assigns names to each panel. The definition of connected panels is only needed for the configuration of panel 1. This configuration can also be discovered by the panel itself during the Learn process. The panel names must be separately written to each panel. They are not shared between panels over the network.



b) Network Options

(These features are only available in firmware version 1.5 onwards.)

Defines which types of events, statuses and keypresses are transmitted to the network and which types are received from each of the other panels on the network. The events are the messages that appear on the display and are mostly defined by the screen on which they are shown. The status defines the state of the LEDs and all the outputs and sounders of a panel. Key presses define user actions and can be one of the following: Silence, Resound, Mute or Reset. At the top of the tab are a few settings that apply to the whole panel. These are the address of the panel, whether general disablements and the zone LEDs are local only, and whether the network is fault tolerant. The rest of the tab is split into two sections, one defines which signals are transmitted over the network and the other defines which signals are received from each of the other panels. The top check boxes of the receive section change the state of all the check boxes below it and can be used as a convenient shortcut. The local signals from a panel's own devices are always enabled and so these settings are greyed out. The different categories are:

Delays – the status and events indicating a delayed alarm state.

Evacuate – the status and events indicating an evacuate state.

Alarm – the status and events indicating an alarm state.

Fault – any fault status and event.

Disables – any status and events indicating individual disablements. General disablements are handled by a global setting for the whole panel.

Tests – any status and events indicating a zone is in test mode.

CC & Pulse – any status and event indicating an active input on the Class Change or Pulse inputs.

Group Activations – any activation associated with groups.

Resound – keypress events associated with the Resound button.

Silence – keypress events associated with the Silence button.

Reset – keypress events associated with the Reset button.

Mute – keypress events associated with the Mute button.

Buzzer on Alarm – Received alarms will be automatically muted.

Buzzer on Fault – Received faults will be automatically muted.

Note: Changes in the configuration on this page do not affect any currently active events, statuses or disablements. These changes should be made while the panel is in a quiescent state.

Addressable Configuration Panel 1.128

FileProtocol

Loop 1Loop 2Loop 3Loop 4ZonesGroupsOutput ProfilesPanelNetworkTransferMimic

Port : COM6RefreshConnect

Network Configuration

Connected PanelsNetwork OptionsNetwork Profiles

Select address to configure1Local Disablements OnlyDisplay Global DisablementsDisplay Local Zones OnlyFault Tolerant Network

Send signals to all panelsSend DelaysSend AlarmsSend FaultsSend DisablesSend TestsSend Group ActivationsSend CC and PulseSend EvacuateSend ResoundSend SilenceSend ResetSend Mute

	Allow Delays	Allow Alarms	Allow Faults	Allow Disables	Allow Tests	Allow Group Activations	Buzzer on Alarm	Buzzer on Fault	Allow CC and Pulse	Allow Evacuate	Allow Resound	Allow Silence	Allow Reset	Allow Mute
Select all panels	<input checked="" type="checkbox"/>	<input checked="" type="checkbox"/>	<input checked="" type="checkbox"/>	<input checked="" type="checkbox"/>	<input checked="" type="checkbox"/>	<input checked="" type="checkbox"/>	<input checked="" type="checkbox"/>	<input checked="" type="checkbox"/>	<input checked="" type="checkbox"/>	<input checked="" type="checkbox"/>	<input checked="" type="checkbox"/>	<input checked="" type="checkbox"/>	<input checked="" type="checkbox"/>	<input checked="" type="checkbox"/>
Receive signals from selected panel														
From Panel 1	<input checked="" type="checkbox"/>	<input checked="" type="checkbox"/>	<input checked="" type="checkbox"/>	<input checked="" type="checkbox"/>	<input checked="" type="checkbox"/>	<input checked="" type="checkbox"/>	<input checked="" type="checkbox"/>	<input checked="" type="checkbox"/>	<input checked="" type="checkbox"/>	<input checked="" type="checkbox"/>	<input checked="" type="checkbox"/>	<input checked="" type="checkbox"/>	<input checked="" type="checkbox"/>	<input checked="" type="checkbox"/>
From Panel 2	<input checked="" type="checkbox"/>	<input checked="" type="checkbox"/>	<input checked="" type="checkbox"/>	<input checked="" type="checkbox"/>	<input checked="" type="checkbox"/>	<input checked="" type="checkbox"/>	<input checked="" type="checkbox"/>	<input checked="" type="checkbox"/>	<input checked="" type="checkbox"/>	<input checked="" type="checkbox"/>	<input checked="" type="checkbox"/>	<input checked="" type="checkbox"/>	<input checked="" type="checkbox"/>	<input checked="" type="checkbox"/>
From Panel 3	<input checked="" type="checkbox"/>	<input checked="" type="checkbox"/>	<input checked="" type="checkbox"/>	<input checked="" type="checkbox"/>	<input checked="" type="checkbox"/>	<input checked="" type="checkbox"/>	<input checked="" type="checkbox"/>	<input checked="" type="checkbox"/>	<input checked="" type="checkbox"/>	<input checked="" type="checkbox"/>	<input checked="" type="checkbox"/>	<input checked="" type="checkbox"/>	<input checked="" type="checkbox"/>	<input checked="" type="checkbox"/>
From Panel 4	<input checked="" type="checkbox"/>	<input checked="" type="checkbox"/>	<input checked="" type="checkbox"/>	<input checked="" type="checkbox"/>	<input checked="" type="checkbox"/>	<input checked="" type="checkbox"/>	<input checked="" type="checkbox"/>	<input checked="" type="checkbox"/>	<input checked="" type="checkbox"/>	<input checked="" type="checkbox"/>	<input checked="" type="checkbox"/>	<input checked="" type="checkbox"/>	<input checked="" type="checkbox"/>	<input checked="" type="checkbox"/>
From Panel 5	<input checked="" type="checkbox"/>	<input checked="" type="checkbox"/>	<input checked="" type="checkbox"/>	<input checked="" type="checkbox"/>	<input checked="" type="checkbox"/>	<input checked="" type="checkbox"/>	<input checked="" type="checkbox"/>	<input checked="" type="checkbox"/>	<input checked="" type="checkbox"/>	<input checked="" type="checkbox"/>	<input checked="" type="checkbox"/>	<input checked="" type="checkbox"/>	<input checked="" type="checkbox"/>	<input checked="" type="checkbox"/>
From Panel 6	<input checked="" type="checkbox"/>	<input checked="" type="checkbox"/>	<input checked="" type="checkbox"/>	<input checked="" type="checkbox"/>	<input checked="" type="checkbox"/>	<input checked="" type="checkbox"/>	<input checked="" type="checkbox"/>	<input checked="" type="checkbox"/>	<input checked="" type="checkbox"/>	<input checked="" type="checkbox"/>	<input checked="" type="checkbox"/>	<input checked="" type="checkbox"/>	<input checked="" type="checkbox"/>	<input checked="" type="checkbox"/>
From Panel 7	<input checked="" type="checkbox"/>	<input checked="" type="checkbox"/>	<input checked="" type="checkbox"/>	<input checked="" type="checkbox"/>	<input checked="" type="checkbox"/>	<input checked="" type="checkbox"/>	<input checked="" type="checkbox"/>	<input checked="" type="checkbox"/>	<input checked="" type="checkbox"/>	<input checked="" type="checkbox"/>	<input checked="" type="checkbox"/>	<input checked="" type="checkbox"/>	<input checked="" type="checkbox"/>	<input checked="" type="checkbox"/>
From Panel 8	<input checked="" type="checkbox"/>	<input checked="" type="checkbox"/>	<input checked="" type="checkbox"/>	<input checked="" type="checkbox"/>	<input checked="" type="checkbox"/>	<input checked="" type="checkbox"/>	<input checked="" type="checkbox"/>	<input checked="" type="checkbox"/>	<input checked="" type="checkbox"/>	<input checked="" type="checkbox"/>	<input checked="" type="checkbox"/>	<input checked="" type="checkbox"/>	<input checked="" type="checkbox"/>	<input checked="" type="checkbox"/>
From Repeater 1	<input checked="" type="checkbox"/>	<input checked="" type="checkbox"/>	<input checked="" type="checkbox"/>	<input checked="" type="checkbox"/>	<input checked="" type="checkbox"/>	<input checked="" type="checkbox"/>	<input checked="" type="checkbox"/>	<input checked="" type="checkbox"/>	<input checked="" type="checkbox"/>	<input checked="" type="checkbox"/>	<input checked="" type="checkbox"/>	<input checked="" type="checkbox"/>	<input checked="" type="checkbox"/>	<input checked="" type="checkbox"/>
From Repeater 2	<input checked="" type="checkbox"/>	<input checked="" type="checkbox"/>	<input checked="" type="checkbox"/>	<input checked="" type="checkbox"/>	<input checked="" type="checkbox"/>	<input checked="" type="checkbox"/>	<input checked="" type="checkbox"/>	<input checked="" type="checkbox"/>	<input checked="" type="checkbox"/>	<input checked="" type="checkbox"/>	<input checked="" type="checkbox"/>	<input checked="" type="checkbox"/>	<input checked="" type="checkbox"/>	<input checked="" type="checkbox"/>
From Repeater 3	<input checked="" type="checkbox"/>	<input checked="" type="checkbox"/>	<input checked="" type="checkbox"/>	<input checked="" type="checkbox"/>	<input checked="" type="checkbox"/>	<input checked="" type="checkbox"/>	<input checked="" type="checkbox"/>	<input checked="" type="checkbox"/>	<input checked="" type="checkbox"/>	<input checked="" type="checkbox"/>	<input checked="" type="checkbox"/>	<input checked="" type="checkbox"/>	<input checked="" type="checkbox"/>	<input checked="" type="checkbox"/>
From Repeater 4	<input checked="" type="checkbox"/>	<input checked="" type="checkbox"/>	<input checked="" type="checkbox"/>	<input checked="" type="checkbox"/>	<input checked="" type="checkbox"/>	<input checked="" type="checkbox"/>	<input checked="" type="checkbox"/>	<input checked="" type="checkbox"/>	<input checked="" type="checkbox"/>	<input checked="" type="checkbox"/>	<input checked="" type="checkbox"/>	<input checked="" type="checkbox"/>	<input checked="" type="checkbox"/>	<input checked="" type="checkbox"/>
From Repeater 5	<input checked="" type="checkbox"/>	<input checked="" type="checkbox"/>	<input checked="" type="checkbox"/>	<input checked="" type="checkbox"/>	<input checked="" type="checkbox"/>	<input checked="" type="checkbox"/>	<input checked="" type="checkbox"/>	<input checked="" type="checkbox"/>	<input checked="" type="checkbox"/>	<input checked="" type="checkbox"/>	<input checked="" type="checkbox"/>	<input checked="" type="checkbox"/>	<input checked="" type="checkbox"/>	<input checked="" type="checkbox"/>
From Repeater 6	<input checked="" type="checkbox"/>	<input checked="" type="checkbox"/>	<input checked="" type="checkbox"/>	<input checked="" type="checkbox"/>	<input checked="" type="checkbox"/>	<input checked="" type="checkbox"/>	<input checked="" type="checkbox"/>	<input checked="" type="checkbox"/>	<input checked="" type="checkbox"/>	<input checked="" type="checkbox"/>	<input checked="" type="checkbox"/>	<input checked="" type="checkbox"/>	<input checked="" type="checkbox"/>	<input checked="" type="checkbox"/>
From Repeater 7	<input checked="" type="checkbox"/>	<input checked="" type="checkbox"/>	<input checked="" type="checkbox"/>	<input checked="" type="checkbox"/>	<input checked="" type="checkbox"/>	<input checked="" type="checkbox"/>	<input checked="" type="checkbox"/>	<input checked="" type="checkbox"/>	<input checked="" type="checkbox"/>	<input checked="" type="checkbox"/>	<input checked="" type="checkbox"/>	<input checked="" type="checkbox"/>	<input checked="" type="checkbox"/>	<input checked="" type="checkbox"/>
From Repeater 8	<input checked="" type="checkbox"/>	<input checked="" type="checkbox"/>	<input checked="" type="checkbox"/>	<input checked="" type="checkbox"/>	<input checked="" type="checkbox"/>	<input checked="" type="checkbox"/>	<input checked="" type="checkbox"/>	<input checked="" type="checkbox"/>	<input checked="" type="checkbox"/>	<input checked="" type="checkbox"/>	<input checked="" type="checkbox"/>	<input checked="" type="checkbox"/>	<input checked="" type="checkbox"/>	<input checked="" type="checkbox"/>

c) Network Profiles

(These features are only available in firmware version 1.5 onwards.)

Defines how the loop devices, fire relay, fault relay and the two sounder circuits should behave when the source of an active status is from another panel. The checkbox at the top of each column enables this feature for each output. Otherwise, the behaviour follows the general panel settings. Each entry selects the output profile to use when the active status is from the corresponding panel which can be different for each panel. The selection at the top of each column changes all the entries below it to the same value and can be used as a convenient shortcut. The setting for devices on the same panel as the active status are not used and so are greyed out. Instead, the general panel settings are followed.

Addressable Configuration Panel 1.126

FileProtocol

Loop 1

Loop 2

Loop 3

Loop 4

Zones

Groups

Output Profiles

Panel

Network

Transfer

Mimic

Port: COM3RefreshDisconnect

Network Configuration

Connected Panels

Network Options

Network Profiles

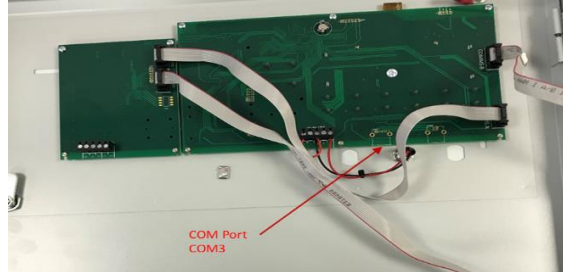
Select address to configure1Select Output Profile for each panel. Choose from the profiles defined in the Output Profiles section.

	<input checked="" type="checkbox"/> Loop Devices	<input type="checkbox"/> Fire Relay	<input type="checkbox"/> Fault Relay	<input type="checkbox"/> Sounder Circuit 1	<input type="checkbox"/> Sounder Circuit 2
From any panel	1	1	1	1	1
From Panel 1	1	1	1	1	1
From Panel 2	1	1	1	1	1
From Panel 3	1	1	1	1	1
From Panel 4	1	1	1	1	1
From Panel 5	1	1	1	1	1
From Panel 6	1	1	1	1	1
From Panel 7	1	1	1	1	1
From Panel 8	1	1	1	1	1
From Repeater 1	1	1	1	1	1
From Repeater 2	1	1	1	1	1
From Repeater 3	1	1	1	1	1
From Repeater 4	1	1	1	1	1
From Repeater 5	1	1	1	1	1
From Repeater 6	1	1	1	1	1
From Repeater 7	1	1	1	1	1
From Repeater 8	1	1	1	1	1

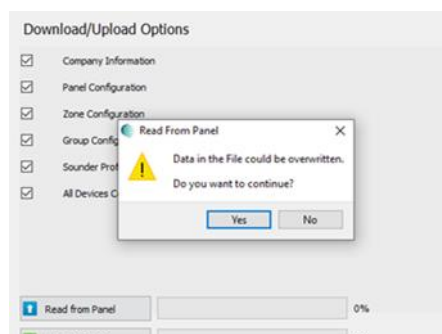
Transfer

To transfer configuration data to/from the panel:

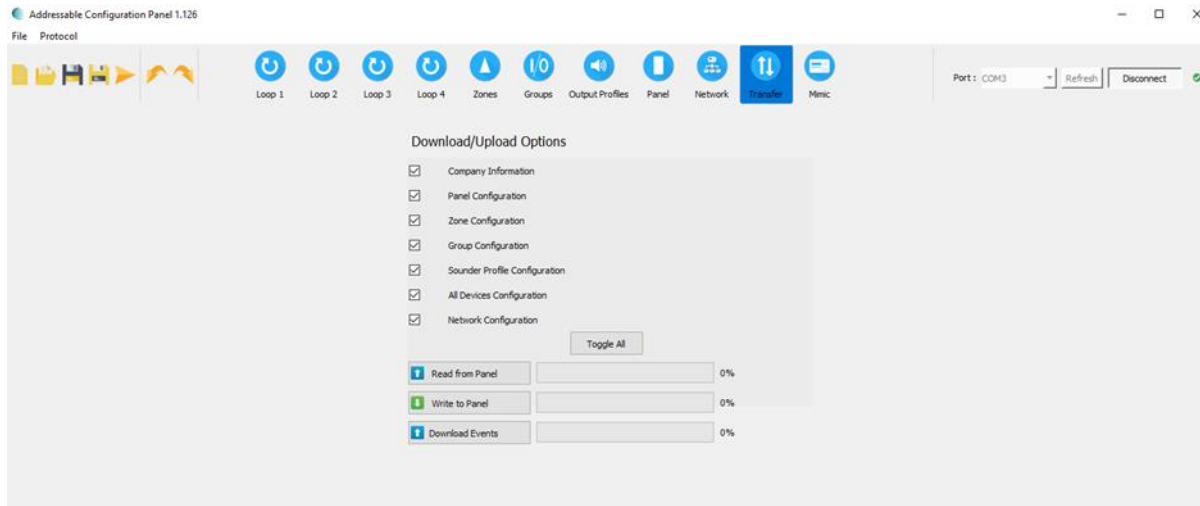
- Open panel and connect USB cable to the COM3 USB Port on the display card.



- Ensure panel is turned on.
- Select Transfer button on the toolbar.
- Click Refresh to populate the list of available COM Ports
- Click Connect to connect the Config Panel SW to the control panel's display card.
- Configure the data to be transferred by selecting required checkboxes:
 - Company Information
 - Panel Configuration
 - Zone Configuration
 - Group Configuration
 - Sounder Profile Configuration
 - All Devices Configuration
- After successfully connecting to the panel, selecting the Read from Panel or Write to Panel button begins the data transfer. % of transfer completed will be displayed. Selecting the Download Events button begins the transfer of the panel's historical events into a CSV file.
- Begin the transfer of data to/from the panel by clicking the appropriate control:
 - Read from Panel
 - Write to Panel
- A dialog will open, warning of data being overwritten.



- Click Yes to continue with download/upload.
- Progress for the transfer will be displayed by the progress bars.



- On completion of data transfer:
 - Click Disconnect.
 - Remove USB connection from display card.

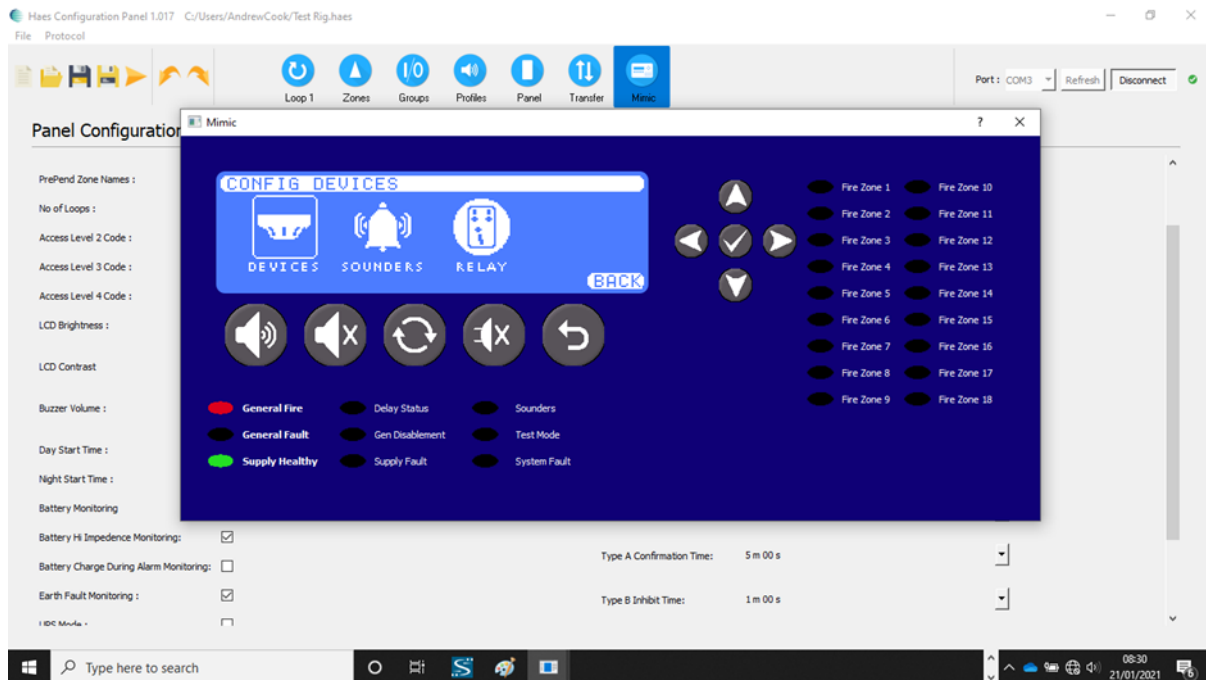
Any differences between the config transferred to the panel and the Loops/devices connected to the panel will initiate a Fault on the panel, accompanied by Illumination of the General Fault LED, together with illumination of any other appropriate fault LED (System Fault, Sounders, etc.), and a fault warning tone being audible.



Any such differences/conflicts should be addressed, either on the Configuration Panel SW, prior to uploading to the panel, or directly on the control panel, using the Config menus.

Mimic

The Mimic button opens a graphical presentation of the panel controls, which mimics the controls and LCD screen. The controls and display on the Mimic graphic are only operational whilst the Config Panel is connected to the fire control panel (connect button).



INSTALLATION

Install the Haes Configuration Panel software on a laptop/tablet:

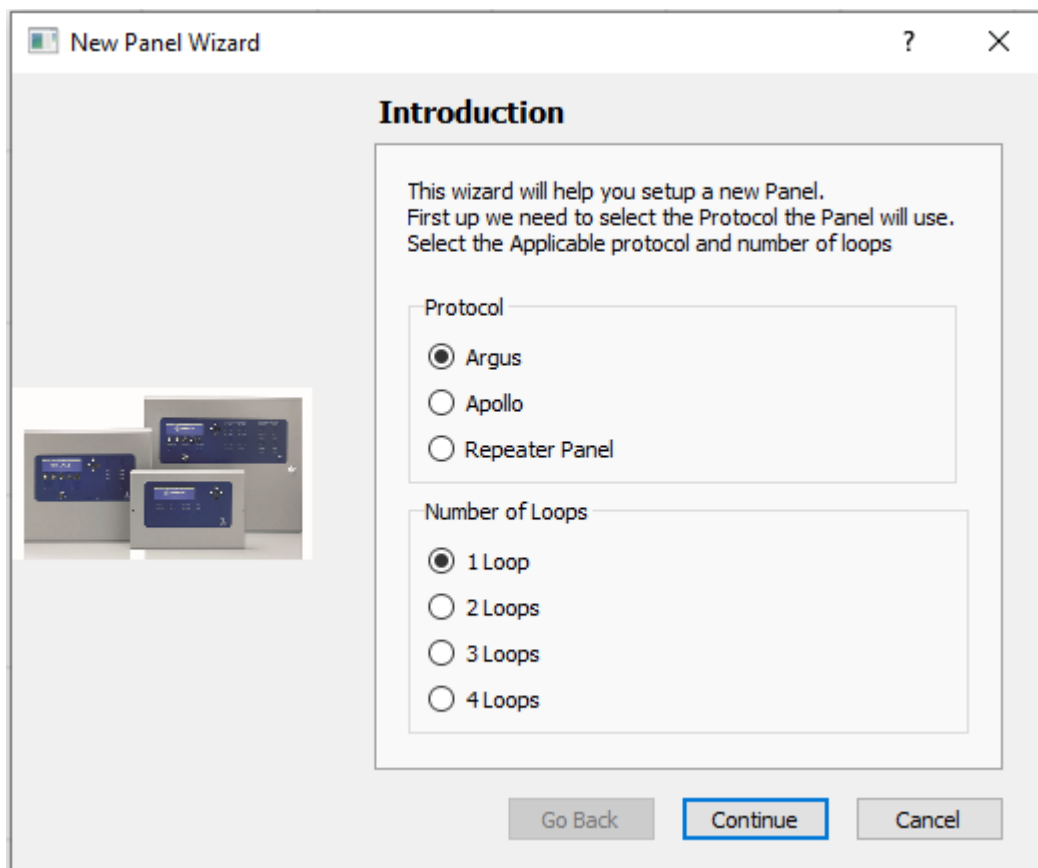
- From the Haes Website (<https://haes-tech.com>) navigate to the DOWNLOADS page.
- Download the installer.
- Follow the on-screen prompts.

CONFIGURING THE SYSTEM

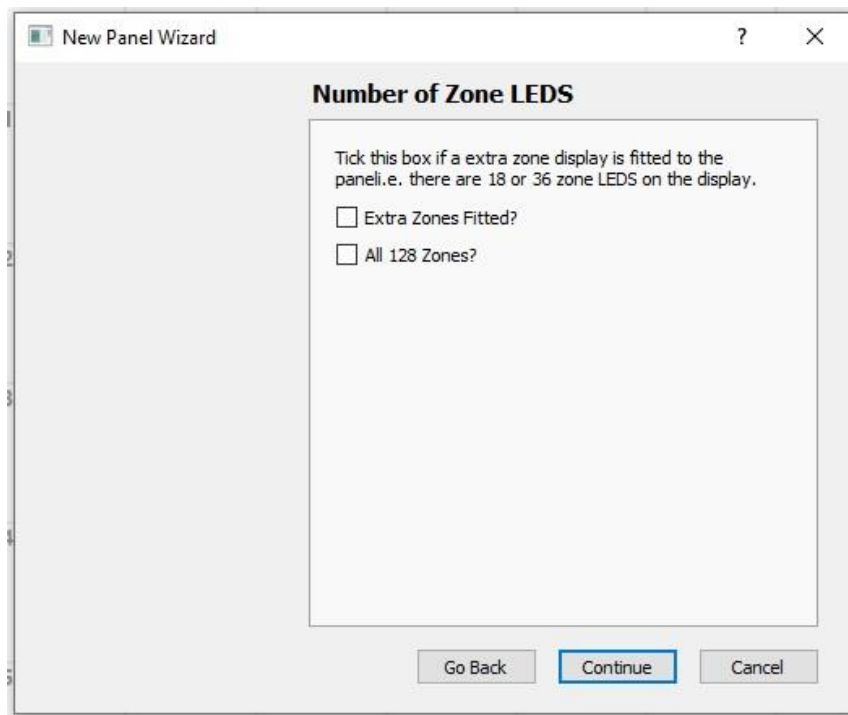
New Panel Setup

To setup a new configuration for a panel:

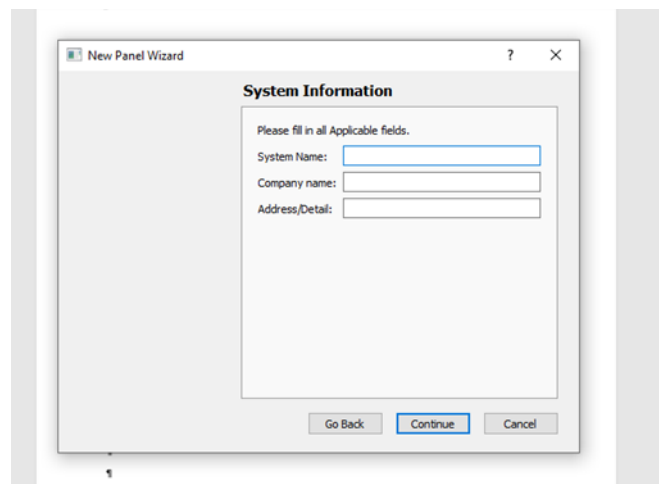
- Select New.
- New Panel Wizard dialog opens.
- Select Protocol (Argus/Apollo).
- Select Number of Loops (1 – 4).
- Click Continue.



- If configuring a 3 or 4 zone panel, with additional zone LEDs on the display (36 LEDs), click the Extra Zones Fitted? Checkbox. To extend the number of zones to 128, select the All 128 Zones? Checkbox.

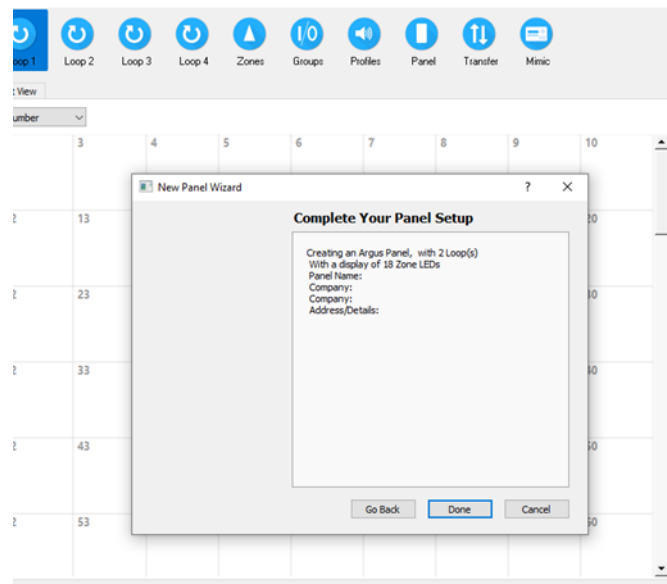


- Click Continue.
- To change the number of zones selected, or the protocol to be used, click Go Back.
- Complete the System Information fields (System Name/Company Name and Address/Detail).



- Click Continue.
- The Complete Your Panel Setup dialog will display the information entered for the panel setup.
- To change any information, click Go Back.

- To complete the initial setup of the panel information, click Done.




- To save the current configuration, at any time, click Save or Save As for new configurations.

System Design

Loop Setup

Populating a Loop

Using the setup page for each loop (Loop1, Loop 2, etc.), populate the Loop address tables with devices from the device list by:

- using the cursor to drag and drop individual devices, from the device list, onto the required address.
- If the same device is required in multiple addresses, select the device in the list and click the rubber stamp button  (next to the Filter dialog box). Click in each address where the device is required. To turn off the rubber stamp feature, simply click the stamp button again.
- Devices can be cut, copied, and pasted into another address, or deleted; by right-clicking the device address.

Configuring devices on a Loop

When the Loop has been populated with devices, by selecting a populated address the configuration graphical display, on the right of the screen displays the device at that address together with a table of information for configuring the individual device. The table differs between input and output devices and is the same as appears in Zone and Group views.

To configure the device, refer to Configuring devices in a Loop, Zone or Group.

Zone Setup

Populating a Zone

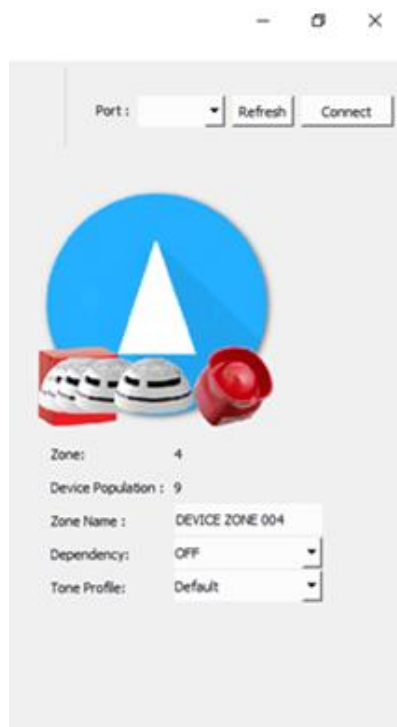
Devices allocated to loop addresses can be divided into Zones, either individually or in groups.

- Select device from the device list and drag-and-drop into the required Zone in the List of All Zones.
- To move multiple devices at the same time:
 - in the device list, select the first device.
 - press and hold Ctrl key and select the other required devices.
 - when all devices have been selected, release Ctrl key and drag-and-drop the devices into the required Zone on the List of All Zones.

Configuring a Zone

Selecting a populated Zone in the List of all Zones, the Selected Zone Devices table shows the devices allocated to that Zone. The configuration graphic, on the right of the page, illustrates the Zone number and the Device Population of the Zone, together with three configurable attributes for the whole Zone:

- Zone Name
- Dependency (OFF/ON)
- Tone Profile (Default/Profile 1 to Profile 15)
- Intrinsically safe (only for Apollo panels)
- Shared (When selected, this zone is shared with other networked panels which also have the same zone number shared, allowing cross panel zone activation.)



Configuring devices in a Zone

Selecting individual devices in the Selected Zone Devices table opens the configuration graphic for that device. The configuration graphical display provides a table of information for configuring the individual device. The table differs between input and output devices and is the same as appears in Loop and Group views.

To configure the device, refer to Configuring devices in a Loop, Zone or Group.

Groups Setup

Forming devices into Groups

Devices allocated to loop addresses can be divided into Groups, either individually or in groups.

- Select a device from the device list and drag-and-drop into the required Group in the list of Groups.
- To move multiple devices at the same time:
 - in the device list, select the first device.
 - press and hold Ctrl key and select the other required devices.
 - when all devices have been selected, release Ctrl key and drag-and-drop the devices into the required Group in the list of Groups.

Configuring a Group

Selecting a populated Group, from the list of Groups, displays all devices allocated to that Group in the two tables to the right of the list of Groups. The devices are split between input devices, in the top table, and output devices in the lower table. Dual use devices, such as detectors with a sounder base appear in both tables. The configuration graphic, on the right of the page, illustrates the Group number and the Device Population of the Group, together with six configurable attributes for the whole Group:

- Group Name
- Activation Mode:

- Disabled – use to temporarily disable the activation of a group without having to change the membership of the group.
- Normal – Any single input device activation, both alarm and non-alarm, will activate the group.
- 2 Stage – The first device to activate will activate the first stage output state. The second and subsequent device activations will activate the normal group output state.
- Coincident – The group only becomes active when the number of active input devices equals or exceeds the alarm count described below.
- Isolation – The activation of the group will disable all other devices in the group apart from the device that caused the activation. Only devices with the “non alarm” setting checked can activate the group.
- Alarm Count - The number of input devices in the group that need to be activated, before the group becomes activated. This only applies to the Coincident mode.
- Delay time - The amount of time, in seconds, to elapse between the last input device in the group being triggered and the group becoming active. This only applies to the Normal and Coincident modes.
- Latching checkbox – When this is set, the activation of the group is latched and must be cleared by a reset.
- Shared (When selected, this group is shared with other networked panels which also have the same group number shared, allowing cross panel behaviour.)
- Tone Profile (for the output device(s)) – This overrides the system and zone profile settings, but only for group activations. The individual profile setting still has top priority.
 - Default
 - Profile 1 to 15

Note: sounder and output activations can still be silenced and resounded.

Selecting individual devices in the input and output device tables opens the configuration graphic for that device. The configuration graphical display provides a table of information for configuring the device. The table differs between input and output devices and is the same as appears in Loop and Zone views.

To configure the device, refer to Configuring devices in a Loop, Zone or Group.

Configuring devices in a Loop, Zone or Group

Selecting individual devices (or multiple devices of the same type) in either the Loop addresses, Selected Zone Devices list or the Group input and output device tables opens the configuration graphic for that device. The configuration graphical display provides a table of information for configuring the device type. The table differs between input and output devices and is the same in Loop, Zone and Group views.

To select multiple devices at the same time:

- in the device list, select the first device.
- press and hold Ctrl key and select the other required devices.
- when all devices have been selected, release Ctrl key.

The device configuration graphical display provides a table of information for configuring the selected device. The table differs between input and output devices:

- Input device (Call Point, Detectors and detector sounder base output device, input modules, etc.):
 - Read
 - Write
 - Address
 - Description
 - Part Number
 - Type
 - Subtype
 - Zone (1 to 36)
 - Input Groups (checkboxes for Groups 1 to 64)
 - and/or
 - Output Groups (checkboxes for Groups 1 to 64)
 - Name
 - Day Sensitivity drop-down:
 - Sensitivity 1 - 4
 - Night Sensitivity drop down:
 - Sensitivity 1 - 4

- Detector Base:
 - Standard Base
 - Sounder Base (opens the following output controls):
 - Alarm Response (Output Off/Tone 1/Tone 2)
 - Zonal Response (Output Off/Tone 1/Tone 2)
 - Evac Response (Output Off/Tone 1/Tone 2)
 - Delay Response (Output Off/Tone 1/Tone 2)
 - Group Response (Output Off/Tone 1/Tone 2)
 - Stage Response (Output Off/Tone 1/Tone 2)
 - Alert Response (Output Off/Tone 1/Tone 2)
 - Class Change (Output Off/Tone 1/Tone 2)
 - Sounder Profile:
 - Default/Profile 1 to 15
and
 - Enable/Disable

Note: The output attributes for the individual device (Alarm Response to Class Change) are disabled if the Sounder Profile is set to Enable.
 - Multitone Sounder Base (opens Sounder Base output controls, above, plus the following):
 - Tone 1 (1. Alternate Warble(250ms) to 31.FP1063.1 – Telecom)
 - Tone 2 (automatically applied, depending on setting of Tone 1)
 - Volume (Disabled/Volume 1/Volume 2/Volume 3)
- Input Attributes checkboxes:
 - Latching – The input device is latched and a reset is needed to clear the active state.
 - Dependency – Enables the system dependency option for this device.
 - Non-Alarm – When set, an active input from this device is not considered to be an indication of a fire and therefore the panel does not go into the alarm state.
- Output Responses checkbox:
 - Silenceable




- Output device (Beacons, Sounders, output module, etc.):
 - Read
 - Write
 - Address
 - Description
 - Part Number
 - Type
 - Subtype
 - Zone
 - Input Groups
 - and/or
 - Output Groups
 - Name
 - Alarm Response (Output Off/Tone 1/Tone 2)
 - Zonal Response (Output Off/Tone 1/Tone 2)
 - Evac Response (Output Off/Tone 1/Tone 2)
 - Delay Response (Output Off/Tone 1/Tone 2)
 - Group Response (Output Off/Tone 1/Tone 2)
 - Stage Response (Output Off/Tone 1/Tone 2)
 - Alert Response (Output Off/Tone 1/Tone 2)
 - Class Change (Output Off/Tone 1/Tone 2)
 - Sounder Profile:
 - Default/Profile 1 to 15
 - and

- Enable/Disable
- Output Responses checkbox:
 - Silenceable

Note: The output attributes for the individual device (Alarm Response to Class Change) are disabled if the Sounder Profile is set to Enable.

Port: Refresh Connect

 1

Address :	16
Description :	Vega Wall Sounder(3 tones)/Beacon
Part Number :	VLS100-AV
Type :	15
Subtype :	0
Zone:	Zone 1
Output Groups:	0
Name :	LOOP 1 DEVICE 16
Alarm Response:	Tone A
Zonal Response:	Tone A
Evac Response:	Tone A
Delay Response:	Tone B
Group Response:	Tone A
Stage Response:	Tone B
Alert Response:	Tone B
Class Change:	Tone A
Sounder Profile:	Default Enable

Output Responses

☒ Silenceable

- The Read and Write controls are used to transfer configuration data to or from the fire control panel, for the individual device.



www.haes-tech.com

