

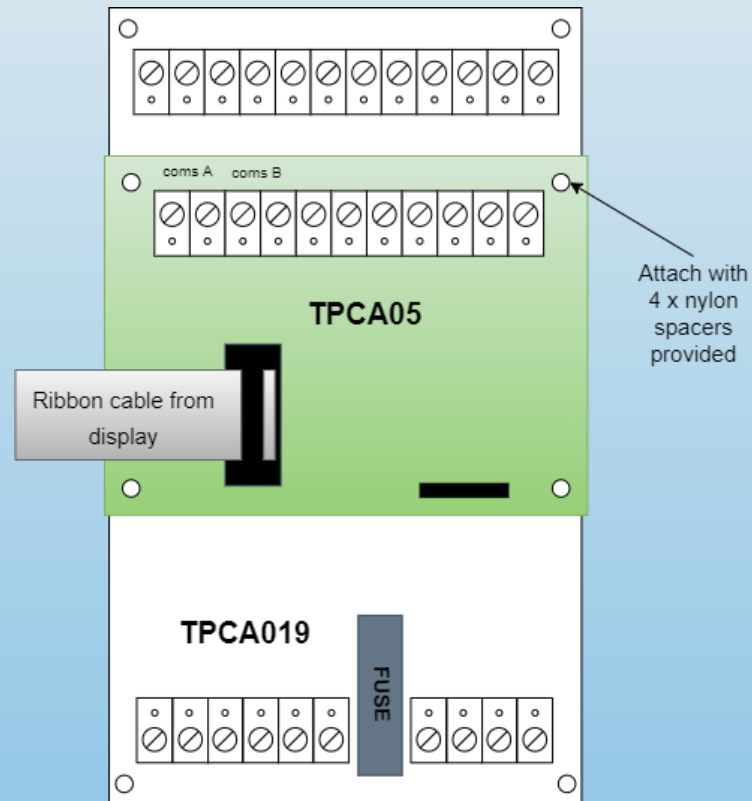


Esprit addressable network setup tutorial





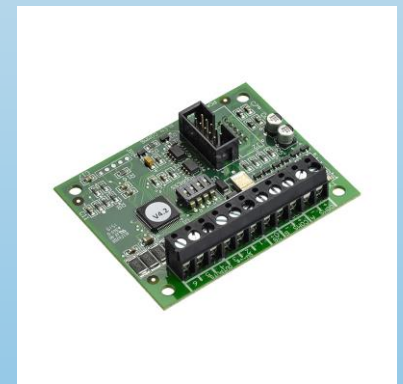
TPCA05 Network card installation





TPCA05 Network card installation

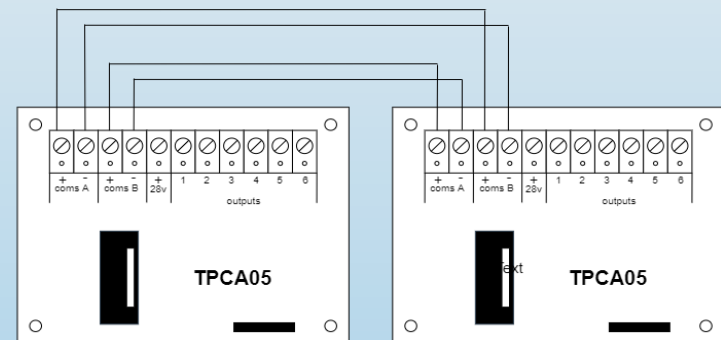
- Ensure the mains power is switched off and batteries are disconnected before proceeding.
- Remove the ribbon cable connector from the socket “COMMS A” located on the middle, left side of the PSU card.
- Fit the PCA05 network card into the “COMMS A” socket and support the card using the supplied pillars.
- Reconnect the ribbon cable connector into the socket on the PCA05 Network card.
- Set the DIL switches to the required value. Add 0 = master panel, add 1 to 7 = slave panels, add 1 to 8 = repeaters.
- Power up the panel and execute the LEARN procedure to add the network card to the configuration.



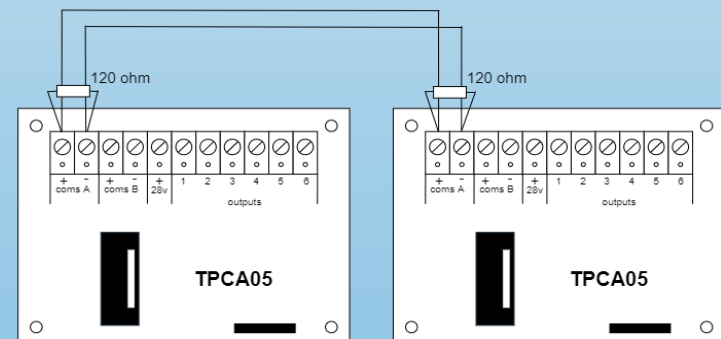
Fault tolerant & legacy wired networks

- Fault tolerant connections require 2 x 2 core fire rated cables.
- Fault tolerant connections are 'coms A' pos & neg (master) to 'coms B' pos & neg on next slave / repeater. The last panel connections will be 'coms A' pos & neg to 'coms B' pos & neg on the master panel. Loop Configuration.
- Legacy mode connection requires a single 2 core fire rated cable.
- Legacy mode connections are 'coms A' pos & neg to 'coms A' pos & neg on next slave / repeater.
- Legacy mode networks should have 120 ohm termination resistors fitted to both ends as per diagram.

Fault tolerant connection



Legacy connection





Network Programming

- Step 1 – select 'config' menu
- Step 2 – access code is 3333
- Step 3 – select 'learn' option
- Step 4 – The system will perform a learning routine and will display the network panels / repeaters found.
- Step 5 – Press the 'return' button to accept.



End of tutorial