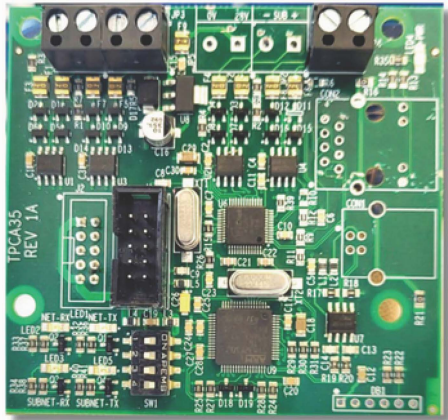


BMS CARD

ESPRIT BMS COMMUNICATIONS CARD



Technical Specifications

Standby Current	5.2mA
Cable Requirements	2 core 1.0mm {min} fire rated cable
Comms A - B	RS485 comms, fused @ 20mA

Order Code

ESA3007	Esprit BMS Network Card
---------	-------------------------

- Simple plug in
- Modbus Protocol (Address 70)
- 04 (0x04) Read Input Registers

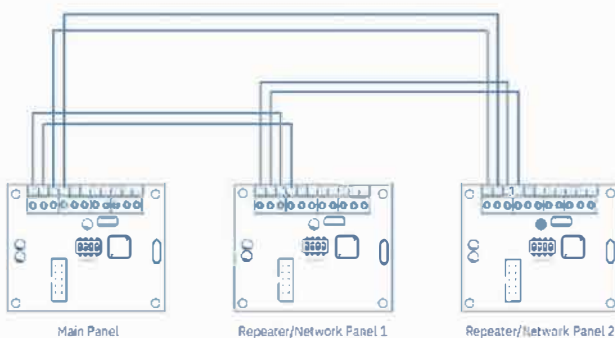
- **System Status Register (2 bytes)**
 - Alarm (1st bit)
 - Fault (2nd but)
 - Disablements (3rd bit)
 - Test Mode (4th bit)
 - Evacuation (5th bit)

- **Panels Status Registers**
 - Alarm (1st bit)
 - Fault (2nd but)
 - Disablements (3rd bit)
 - Test Mode (4th bit)
 - Evacuation (5th bit)
 - Alarm Silenced (6th bit)
 - Buzzer Muted (7th bit)
 - Class Change Active (8th bit)
 - Alert Active (9th bit)

- **Zone Status Registers (64x40 zones)**
 - Alarm (1 bit per zone)

+44 (0) 1895 546205

Fault Tolerant Loop Wiring



Radial/Legacy Wiring

